

For Research Use Only

# EPPK1 Recombinant antibody

Catalog Number: 84344-2-RR



## Basic Information

Catalog Number:

84344-2-RR

Concentration:

1000 µg/ml

Source:

Rabbit

Isotype:

IgG

Immunogen Catalog Number:

AG35749

GenBank Accession Number:

NM\_031308.3

GeneID (NCBI):

83481

UNIPROT ID:

P58107

Full Name:

epiplakin 1

Calculated MW:

555 kDa

Observed MW:

500-600 kDa

Purification Method:

Protein A purification

CloneNo.:

241633B5

Recommended Dilutions:

WB 1:5000-1:50000

IF/ICC 1:125-1:500

## Applications

Tested Applications:

WB, IF/ICC, FC (Intra), ELISA

Species Specificity:

human

Positive Controls:

WB : L02 cells,

IF/ICC : HeLa cells,

## Background Information

Epplakin 1 (EPPK1), belonging to the plakin family, is involved in connecting intermediate filaments and regulating their reorganization in stress response. Studies have shown that EPPK1 is involved in the progression of various cancers, such as liver cancer, cervical cancer, and bladder urothelial carcinoma.

## Storage

Storage:

Store at -20°C. Stable for one year after shipment.

Storage Buffer:

PBS with 0.02% sodium azide and 50% glycerol

Aliquoting is unnecessary for -20°C storage

For technical support and original validation data for this product please contact:

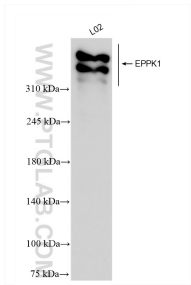
T: 4006900926

E: [Proteintech-CN@ptglab.com](mailto:Proteintech-CN@ptglab.com)

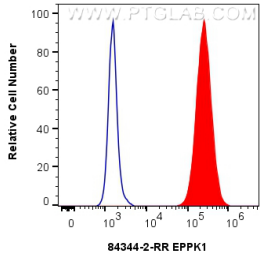
W: [ptgcn.com](http://ptgcn.com)

This product is exclusively available under Proteintech Group brand and is not available to purchase from any other manufacturer.

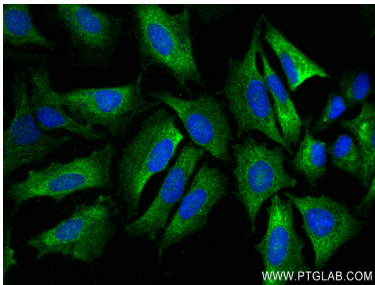
Selected Validation Data



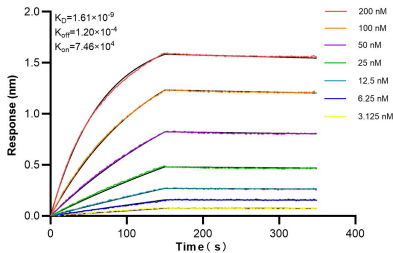
L02 cells were subjected to SDS PAGE followed by western blot with 84344-2-RR (EPPK1 antibody) at dilution of 1:10000 incubated at room temperature for 1.5 hours.



1x10<sup>6</sup> MCF-7 cells were intracellularly stained with 0.25 ug EPPK1 Recombinant antibody (84344-2-RR, Clone:241633B5) and CoraLite®488-Conjugated Goat Anti-Rabbit IgG(H+L) (SA00013-2) (red), or 0.25 ug Rabbit IgG Isotype Control RecAb (98136-1-RR, Clone: 240953C9) (blue). Cells were fixed with 4% PFA and permeabilized with Flow Cytometry Perm Buffer (PF00011-C).



Immunofluorescent analysis of (-20°C Ethanol) fixed HeLa cells using EPPK1 antibody (84344-2-RR, Clone: 241633B5 ) at dilution of 1:250 and CoraLite®488-Conjugated Goat Anti-Rabbit IgG(H+L) (SA00013-2).



Bioluminescence resonance transfer (BLI) kinetic assays of 84344-2-RR against Human EPPK1 were performed. The affinity constant is 1.61 nM.