

For Research Use Only

EPPK1 Recombinant antibody, PBS Only (Detector)

Catalog Number: 84344-2-PBS



Basic Information

Catalog Number:

84344-2-PBS

Concentration:

1 mg/ml

Source:

Rabbit

Isotype:

IgG

Immunogen Catalog Number:

AG35749

GenBank Accession Number:

NM_031308.3

GeneID (NCBI):

83481

UNIPROT ID:

P58107

Full Name:

epiplakin 1

Calculated MW:

555 kDa

Observed MW:

500-600 kDa

Purification Method:

Protein A purification

CloneNo.:

241633B5

Applications

Tested Applications:

WB, IF/ICC, FC (Intra), Cytometric bead array, Indirect ELISA

Species Specificity:

human

Background Information

Epplakin 1 (EPPK1), belonging to the plakin family, is involved in connecting intermediate filaments and regulating their reorganization in stress response. Studies have shown that EPPK1 is involved in the progression of various cancers, such as liver cancer, cervical cancer, and bladder urothelial carcinoma.

Storage

Storage:

Store at -80°C.

The product is shipped with ice packs. Upon receipt, store it immediately at -80°C

Storage Buffer:

PBS only, pH7.3

For technical support and original validation data for this product please contact:

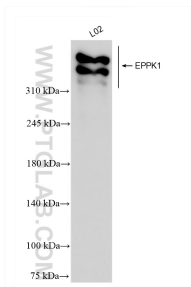
T: 4006900926

E: Proteintech-CN@ptglab.com

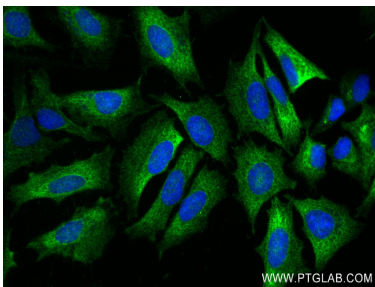
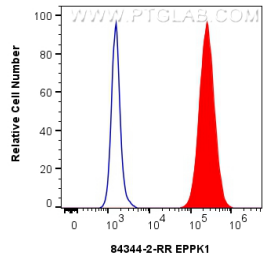
W: ptgcn.com

This product is exclusively available under Proteintech Group brand and is not available to purchase from any other manufacturer.

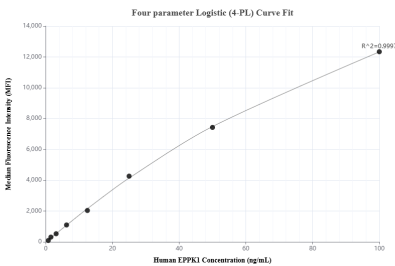
Selected Validation Data



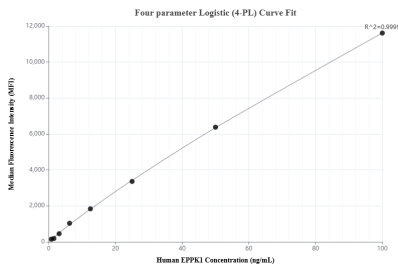
L02 cells were subjected to SDS PAGE followed by western blot with 84344-2-RR (EPPK1 antibody) at dilution of 1:10000 incubated at room temperature for 1.5 hours. This data was developed using the same antibody clone with 84344-2-PBS in a different storage buffer formulation.



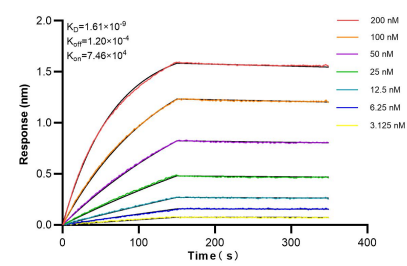
Immunofluorescent analysis of (-20°C Ethanol) fixed HeLa cells using EPPK1 antibody (84344-2-RR, Clone: 241633B5) at dilution of 1:250 and CoraLite®488-Conjugated Goat Anti-Rabbit IgG(H+L) (SA00013-2) (red), or 0.25 ug Rabbit IgG Isotype Control RecAb (98136-1-RR, Clone: 240953C9) (blue). Cells were fixed with 4% PFA and permeabilized with Flow Cytometry Perm Buffer (PF00011-C). This data was developed using the same antibody clone with 84344-2-PBS in a different storage buffer formulation.



Cytometric bead array standard curve of MP01220-1, EPPK1 Recombinant Matched Antibody Pair, PBS Only. Capture antibody: 84344-3-PBS. Detection antibody: 84344-2-PBS. Standard: Ag35749. Range: 0.781-100 ng/mL.



Cytometric bead array standard curve of MP01220-2, EPPK1 Recombinant Matched Antibody Pair, PBS Only. Capture antibody: 84344-4-PBS. Detection antibody: 84344-2-PBS. Standard: Ag35749. Range: 0.781-100 ng/mL.



Bilayer interferometry (BLI) kinetic assays of 84344-2-RR against Human EPPK1 were performed. The affinity constant is 1.61 nM.