

For Research Use Only

# ORAI3 Recombinant antibody, PBS Only (Detector)

Catalog Number: 84340-2-PBS



## Basic Information

<b>Catalog Number:</b> 84340-2-PBS	<b>GenBank Accession Number:</b> BC006126	<b>Purification Method:</b> Protein A purification
<b>Size:</b> 1 mg/ml	<b>GeneID (NCBI):</b> 93129	<b>CloneNo.:</b> 241568A2
<b>Source:</b> Rabbit	<b>UNIPROT ID:</b> Q9BRQ5	
<b>Isotype:</b> IgG	<b>Full Name:</b> ORAI calcium release-activated calcium modulator 3	
<b>Immunogen Catalog Number:</b> AG36135	<b>Calculated MW:</b> 295 aa, 32 kDa	
	<b>Observed MW:</b> ~30 kDa, ~60 kDa	

## Applications

**Tested Applications:**  
WB, IF/ICC, Cytometric bead array, Indirect ELISA

**Species Specificity:**  
human

## Background Information

ORAI3, also named TMEM142C, is a key regulator or component of store-operated  $\text{Ca}^{2+}$  channels and transcription factor NFAT nuclear import. ORAI3 channels appeared to differ from Orai1 and -2 in being somewhat resistant to  $\text{Ca}^{2+}$  depotentiation. The molecular weight of monomers and dimers for Orai3 is about 30-35 kDa and 60-70 kDa (PMID: 20971921; 17293345; 22580508).

## Storage

**Storage:**  
Store at  $-80^{\circ}\text{C}$ .  
**The product is shipped with ice packs. Upon receipt, store it immediately at  $-80^{\circ}\text{C}$**

**Storage Buffer:**  
PBS Only

For technical support and original validation data for this product please contact:

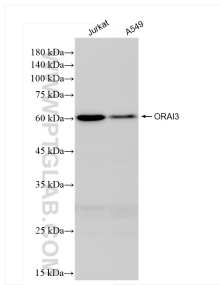
T: 4006900926

E: [Proteintech-CN@ptglab.com](mailto:Proteintech-CN@ptglab.com)

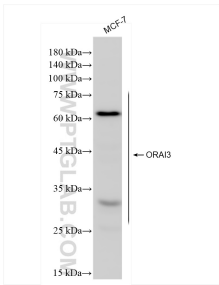
W: [ptgcn.com](http://ptgcn.com)

**This product is exclusively available under Proteintech Group brand and is not available to purchase from any other manufacturer.**

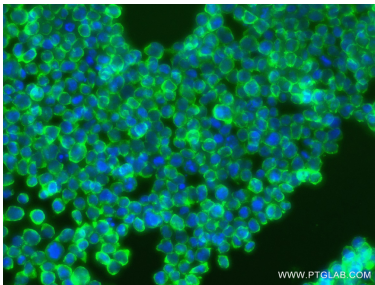
Selected Validation Data



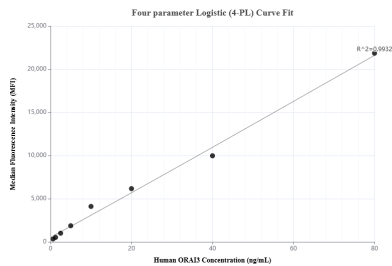
Various lysates were subjected to SDS PAGE followed by western blot with 84340-2-RR (ORAI3 antibody) at dilution of 1:3000 incubated at room temperature for 1.5 hours. This data was developed using the same antibody clone with 84340-2-PBS in a different storage buffer formulation.



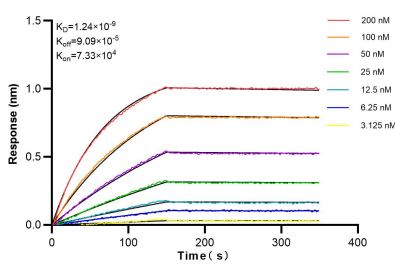
MCF-7 cells were subjected to SDS PAGE followed by western blot with 84340-2-RR (ORAI3 antibody) at dilution of 1:3000 incubated at room temperature for 1.5 hours. This data was developed using the same antibody clone with 84340-2-PBS in a different storage buffer formulation.



Immunofluorescent analysis of (4% PFA) fixed Jurkat cells using ORAI3 antibody (84340-2-RR, Clone: 241568A2 ) at dilution of 1:400 and CoraLite®488-Conjugated Goat Anti-Rabbit IgG(H+L) (SA00013-2). This data was developed using the same antibody clone with 84340-2-PBS in a different storage buffer formulation.



Cytometric bead array standard curve of MP01228-1, ORAI3 Recombinant Matched Antibody Pair, PBS Only. Capture antibody: 84340-3-PBS. Detection antibody: 84340-2-PBS. Standard: Ag36135. Range: 0.625-80 ng/mL



Biolayer interferometry (BLI) kinetic assays of 84340-2-RR against Human ORAI3 were performed. The affinity constant is 1.24 nM.