

For Research Use Only

C5AR1/CD88 Recombinant antibody, PBS Only (Capture/Detector)

Catalog Number: 84336-4-PBS



Basic Information

Catalog Number: 84336-4-PBS	GenBank Accession Number: NM_001736.4	Purification Method: Protein A purification
Size: 1 mg/ml	GeneID (NCBI): 728	CloneNo.: 241712A8
Source: Rabbit	UNIPROT ID: P21730	
Isotype: IgG	Full Name: complement component 5a receptor 1	
	Calculated MW: 39kDa	

Applications

Tested Applications:
Cytometric bead array, Sandwich ELISA, Indirect ELISA,
Sample test

Species Specificity:
human

Background Information

Storage

Storage:
Store at -80°C.
The product is shipped with ice packs. Upon receipt, store it immediately at -80°C
Storage Buffer:
PBS Only

For technical support and original validation data for this product please contact:

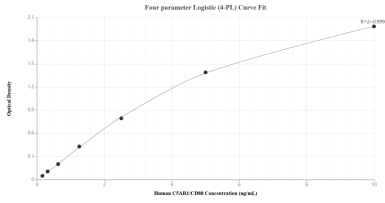
T: 4006900926

E: Proteintech-CN@ptglab.com

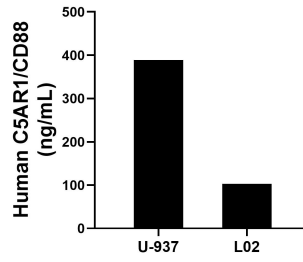
W: ptgcn.com

This product is exclusively available under Proteintech Group brand and is not available to purchase from any other manufacturer.

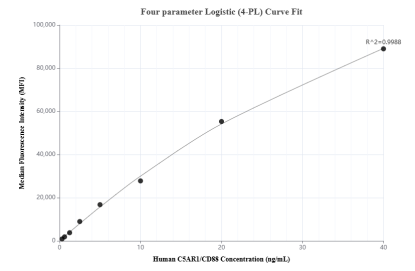
Selected Validation Data



Sandwich ELISA standard curve of MP01255-4, Human C5AR1/CD88 Recombinant Matched Antibody Pair - PBS only. 84336-8-PBS was coated to a plate as the capture antibody and incubated with serial dilutions of standard Eg2185. 84336-4-PBS was HRP conjugated as the detection antibody. Range: 0.156-10 ng/mL



The mean C5AR1/CD88 concentration was determined to be 388.97 ng/mL in U-937 cell extract based on a 2.20 mg/mL extract load and 103.14 ng/mL in L02 cell extract based on a 1.30 mg/mL extract load.



Cytometric bead array standard curve of MP01255-1, C5AR1/CD88 Recombinant Matched Antibody Pair, PBS Only. Capture antibody: 84336-4-PBS. Detection antibody: 84336-1-PBS. Standard: Eg2185. Range: 0.313-40 ng/mL