

For Research Use Only

# RAPGEF2 Recombinant antibody

Catalog Number: 84331-4-RR



## Basic Information

Catalog Number:

84331-4-RR

Size:

1000 µg/ml

Source:

Rabbit

Isotype:

IgG

Immunogen Catalog Number:

AG35288

GenBank Accession Number:

NM\_014247.2

GeneID (NCBI):

9693

UNIPROT ID:

Q9Y4G8

Full Name:

Rap guanine nucleotide exchange factor (GEF) 2

Calculated MW:

167kDa

Observed MW:

200 kDa

Purification Method:

Protein A purification

CloneNo.:

241637G5

Recommended Dilutions:

WB 1:5000-1:50000

IHC 1:50-1:500

IF/ICC 1:125-1:500

## Applications

Tested Applications:

WB, IHC, IF/ICC, ELISA

Species Specificity:

human, mouse

**Note-IHC: suggested antigen retrieval with TE buffer pH 9.0; (\*) Alternatively, antigen retrieval may be performed with citrate buffer pH 6.0**

Positive Controls:

WB : HeLa cells, SH-SY5Y cells, Jurkat cells

IHC : mouse kidney tissue,

IF/ICC : Jurkat cells,

## Background Information

### Storage

Storage:

Store at -20°C. Stable for one year after shipment.

Storage Buffer:

PBS with 0.02% sodium azide and 50% glycerol pH 7.3.

Aliquoting is unnecessary for -20°C storage

For technical support and original validation data for this product please contact:

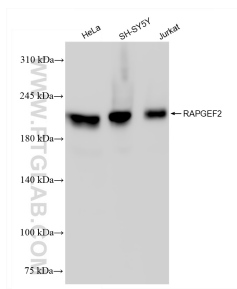
T: 4006900926

E: Proteintech-CN@ptglab.com

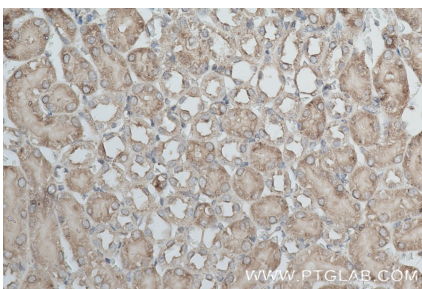
W: ptgcn.com

This product is exclusively available under Proteintech Group brand and is not available to purchase from any other manufacturer.

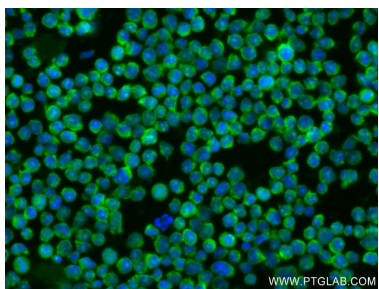
## Selected Validation Data



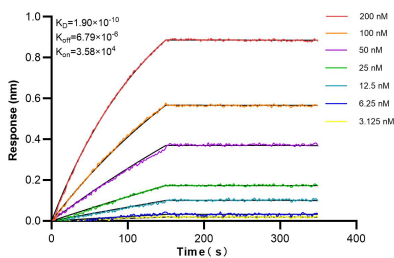
Various lysates were subjected to SDS PAGE followed by western blot with 84331-4-RR (RAPGEF2 antibody) at dilution of 1:10000 incubated at room temperature for 1.5 hours.



Immunohistochemical analysis of paraffin-embedded mouse kidney tissue slide using 84331-4-RR (RAPGEF2 antibody) at dilution of 1:200 (under 40x lens). Heat mediated antigen retrieval with Tris-EDTA buffer (pH 9.0).



Immunofluorescent analysis of (4% PFA) fixed Jurkat cells using RAPGEF2 antibody (84331-4-RR, Clone: 241637G5 ) at dilution of 1:250 and CoraLite®488-Conjugated Goat Anti-Rabbit IgG(H+L) (SA00013-2).



Biolayer interferometry (BLI) kinetic assays of 84331-4-RR against Human RAPGEF2 were performed. The affinity constant is 0.19 nM.