

For Research Use Only

# RAPGEF2 Recombinant antibody, PBS Only (Detector)

Catalog Number: 84331-2-PBS



## Basic Information

Catalog Number:

84331-2-PBS

Concentration:

1 mg/ml

Source:

Rabbit

Isotype:

IgG

Immunogen Catalog Number:

AG35288

GenBank Accession Number:

NM\_014247.2

GeneID (NCBI):

9693

UNIPROT ID:

Q9Y4G8

Full Name:

Rap guanine nucleotide exchange factor (GEF) 2

Calculated MW:

167kDa

Purification Method:

Protein A purification

CloneNo.:

241637C6

## Applications

Tested Applications:

Cytometric bead array, Sandwich ELISA, Indirect ELISA, Sample test

Species Specificity:

human

## Background Information

### Storage

Storage:

Store at -80°C.

The product is shipped with ice packs. Upon receipt, store it immediately at -80°C

Storage Buffer:

PBS Only

For technical support and original validation data for this product please contact:

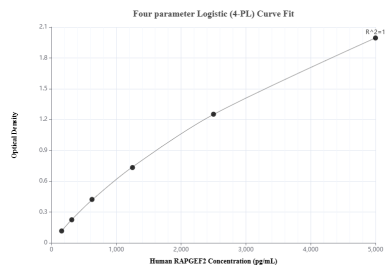
T: 4006900926

E: [Proteintech-CN@ptglab.com](mailto:Proteintech-CN@ptglab.com)

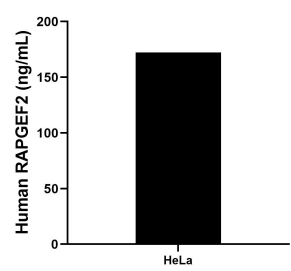
W: [ptgcn.com](http://ptgcn.com)

This product is exclusively available under Proteintech Group brand and is not available to purchase from any other manufacturer.

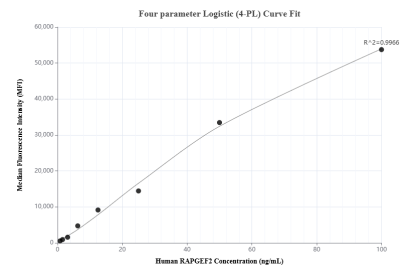
## Selected Validation Data



Sandwich ELISA standard curve of MP01235-2, Human RAPGEF2 Recombinant Matched Antibody Pair - PBS only. 84331-3-PBS was coated to a plate as the capture antibody and incubated with serial dilutions of standard Ag35288. 84331-2-PBS was HRP conjugated as the detection antibody. Range: 156-5000 pg/mL



The mean RAPGEF2 concentration was determined to be 172.25 ng/mL in HeLa cell extract based on a 1.5 mg/mL extract load.



Cytometric bead array standard curve of MP01235-1, RAPGEF2 Recombinant Matched Antibody Pair, PBS Only. Capture antibody: 84331-1-PBS. Detection antibody: 84331-2-PBS. Standard: Ag35288. Range: 0.781-100 ng/mL