

For Research Use Only

CLEC14A Recombinant antibody, PBS Only

Catalog Number: 84327-1-PBS



Basic Information

Catalog Number: 84327-1-PBS	GenBank Accession Number: BC031567	Purification Method: Protein A purification
Concentration: 1 mg/ml	GeneID (NCBI): 161198	CloneNo.: 241206D3
Source: Rabbit	UNIPROT ID: Q86T13	
Isotype: IgG	Full Name: C-type lectin domain family 14, member A	
Immunogen Catalog Number: AG21081	Calculated MW: 490 aa, 52 kDa	
	Observed MW: 52 kDa, 100 kDa	

Applications

Tested Applications:
WB, IHC, Indirect ELISA

Species Specificity:
human, mouse, rat

Background Information

CLEC14A is a single-pass type I transmembrane protein whose extracellular domain consists of a C-type lectin-like domain (CTLD), a series of EGF-like domains, and a sushi-like domain (PMID: 23644659). CLEC14A is a member of the C-type lectin domain superfamily that also includes endosialin, thrombomodulin and CD93 (PMID: 16336259). It has been reported that CLEC14A is specifically expressed in endothelial cells and mediates cell to cell adhesion (PMID: 21095181). CLEC14A may be involved in tumor angiogenesis (PMID: 21706054; 23644659).

Storage

Storage:
Store at -80°C.
The product is shipped with ice packs. Upon receipt, store it immediately at -80°C

Storage Buffer:
PBS only, pH7.3

For technical support and original validation data for this product please contact:

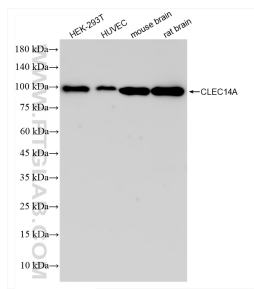
T: 4006900926

E: Proteintech-CN@ptglab.com

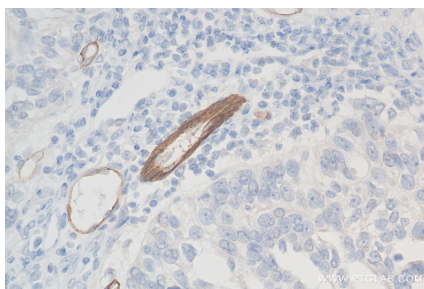
W: ptgcn.com

This product is exclusively available under Proteintech Group brand and is not available to purchase from any other manufacturer.

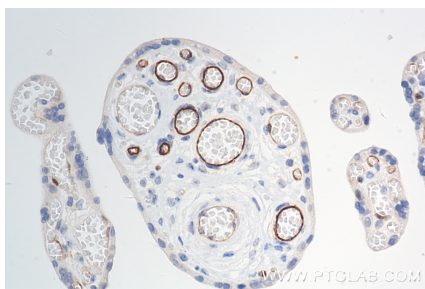
Selected Validation Data



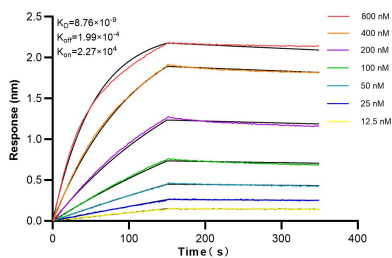
Various lysates were subjected to SDS PAGE followed by western blot with 84327-1-RR (CLEC14A antibody) at dilution of 1:5000 incubated at room temperature for 1.5 hours. This data was developed using the same antibody clone with 84327-1-PBS in a different storage buffer formulation.



Immunohistochemical analysis of paraffin-embedded human ovary cancer tissue slide using 84327-1-RR (CLEC14A antibody) at dilution of 1:400 (under 40x lens). Heat mediated antigen retrieval with Tris-EDTA buffer (pH 9.0). This data was developed using the same antibody clone with 84327-1-PBS in a different storage buffer formulation.



Immunohistochemical analysis of paraffin-embedded human placenta tissue slide using 84327-1-RR (CLEC14A antibody) at dilution of 1:400 (under 40x lens). Heat mediated antigen retrieval with Tris-EDTA buffer (pH 9.0). This data was developed using the same antibody clone with 84327-1-PBS in a different storage buffer formulation.



Biolayer interferometry (BLI) kinetic assays of 84327-1-RR against Human CLEC14A were performed. The affinity constant is 8.76 nM.