

## CD45.1 Recombinant antibody

Catalog Number: 84325-2-RR

## Basic Information

Catalog Number:

84325-2-RR

Concentration:

1000 µg/ml

Source:

Rabbit

Isotype:

IgG

GenBank Accession Number:

GeneID (NCBI):

19264

Full Name:

protein tyrosine phosphatase,  
receptor type, C

Observed MW:

200 kDa

Purification Method:

Protein A purification

CloneNo.:

240921A2

Recommended Dilutions:

WB 1:2000-1:10000

IHC 1:2000-1:8000

IF-P 1:200-1:800

IF-Fro 1:200-1:800

## Applications

Tested Applications:

WB, IHC, IF-P, IF-Fro, ELISA

Species Specificity:

mouse

**Note-IHC: suggested antigen retrieval with  
TE buffer pH 9.0; (\*) Alternatively, antigen  
retrieval may be performed with citrate  
buffer pH 6.0**

Positive Controls:

WB : SJL mouse thymus tissue, SJL mouse spleen tissue

IHC : mouse spleen tissue,

IF-P : mouse spleen tissue,

IF-Fro : mouse spleen tissue,

## Background Information

CD45, also known as protein tyrosine phosphatase, receptor type C, is a type I transmembrane protein expressed on the surface of all haematopoietic cells with the exception of erythrocytes and platelets (PMID: 3489673; 28615666). CD45 is a pan-haematopoietic cell marker and has been shown to be essential for T- and B-cell activation and signalling (PMID: 9429890; 16378097). Allelic variants of mouse CD45, CD45.1 (Ly5.1) and CD45.2 (Ly5.1), have been established as a marker system to track haematopoietic cells following congenic mouse bone marrow transplants (PMID: 28615666). CD45.2 is the common form and is expressed by most of the established strains, while CD45.1 is found in only a few like the SJL mouse strain (PMID: 3489673).

## Storage

Storage:

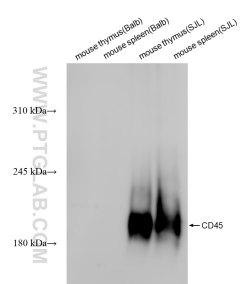
Store at -20°C. Stable for one year after shipment.

Storage Buffer:

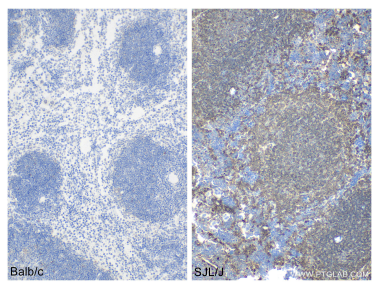
PBS with 0.02% sodium azide and 50% glycerol, pH7.3

Aliquoting is unnecessary for -20°C storage

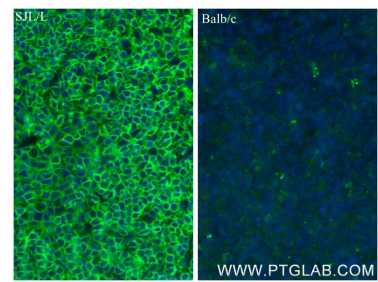
## Selected Validation Data



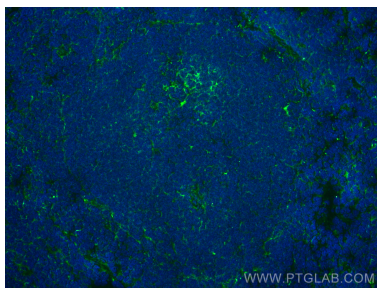
Various lysates were subjected to SDS PAGE followed by western blot with 84325-2-RR (Mouse CD45.1-ly5a-Domain 2 antibody) at dilution of 1:5000 incubated at room temperature for 1.5 hours.



Immunohistochemical analysis of paraffin-embedded mouse spleen tissue slide using 84325-2-RR (CD45.1 antibody) at dilution of 1:4000 (under 10x lens). Heat mediated antigen retrieval with Tris-EDTA buffer (pH 9.0).



Immunofluorescent analysis of (4% PFA) fixed paraffin-embedded mouse spleen tissue using CD45.1 antibody (84325-2-RR, Clone: 240921A2) at dilution of 1:400 and CoraLite@488-Conjugated Goat Anti-Rabbit IgG(H+L) (SA00013-2). Heat-mediated antigen retrieval with Tris-EDTA buffer (pH 9.0).



Immunofluorescent analysis of un-fixed frozen OCT-embedded mouse spleen tissue using CD45.1 antibody (84325-2-RR, Clone: 240921A2) at dilution of 1:400 and CoraLite@488-Conjugated Goat Anti-Rabbit IgG(H+L) (SA00013-2).