

For Research Use Only

SEL1L Recombinant antibody

Catalog Number: 84317-7-RR



Basic Information

Catalog Number:

84317-7-RR

Concentration:

1000 μ g/ml

Source:

Rabbit

Isotype:

IgG

Immunogen Catalog Number:

AG32178

GenBank Accession Number:

NM_005065

GeneID (NCBI):

6400

UNIPROT ID:

Q9UBV2

Full Name:

sel-1 suppressor of lin-12-like (C. elegans)

Calculated MW:

89 kDa

Observed MW:

89 kDa

Purification Method:

Protein A purification

CloneNo.:

241594G2

Recommended Dilutions:

WB 1:2000-1:6000

Applications

Tested Applications:

WB, FC (Intra), ELISA

Species Specificity:

human, mouse, rat

Positive Controls:

WB : NIH/3T3 cells, HepG2 cells, MCF-7 cells, BxPC-3 cells, U-87 MG cells, mouse kidney tissue, rat liver tissue

Background Information

SEL1L (Suppressor Enhancer Lin-12 Like) is an endoplasmic reticulum-resident transmembrane protein that plays a critical role in collagen metabolism. It has been identified as an intracellular rheostat controlling collagen turnover, which is the balance between collagen synthesis and degradation. The protein's luminal face contains a Fibronectin-2 (FN2) domain, which is known to bind collagen. SEL1L functions as a sensor of collagen biosynthesis and is necessary for the upregulation of MRC2 (mannose receptor, C-type 2), a collagen endocytic receptor that mediates the clearance of collagen. .

Storage

Storage:

Store at -20°C. Stable for one year after shipment.

Storage Buffer:

PBS with 0.02% sodium azide and 50% glycerol

Aliquoting is unnecessary for -20°C storage

For technical support and original validation data for this product please contact:

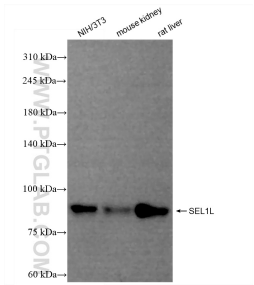
T: 4006900926

E: Proteintech-CN@ptglab.com

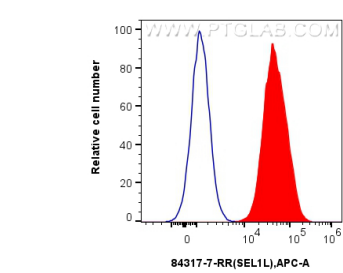
W: ptgcn.com

This product is exclusively available under Proteintech Group brand and is not available to purchase from any other manufacturer.

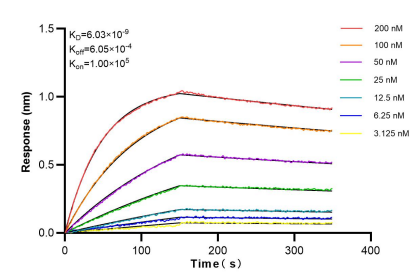
Selected Validation Data



Mouse kidney tissue, rat liver tissue were subjected to SDS PAGE followed by western blot with 84317-7-RR (SEL1L antibody) at dilution of 1:5000 incubated at room temperature for 1.5 hours.



1x10⁶ MCF-7 cells were intracellularly stained with 0.25 ug SEL1L Recombinant antibody (84317-7-RR, Clone:241594G2) and APC-Conjugated Goat Anti-Rabbit IgG(H+L)(red), or 0.25 ug Isotype Control (blue). Cells were fixed with 4% PFA and permeabilized with Flow Cytometry Perm Buffer (PF00011-C).



Biolayer interferometry (BLI) kinetic assays of 84317-7-RR against Human SEL1L were performed. The affinity constant is 6.03 nM.