

For Research Use Only

SEL1L Recombinant antibody, PBS Only (Detector)

Catalog Number: 84317-2-PBS



Basic Information

Catalog Number:

84317-2-PBS

Concentration:

1 mg/ml

Source:

Rabbit

Isotype:

IgG

Immunogen Catalog Number:

AG32178

GenBank Accession Number:

NM_005065

GeneID (NCBI):

6400

UNIPROT ID:

Q9UBV2

Full Name:

sel-1 suppressor of lin-12-like (C. elegans)

Calculated MW:

89 kDa

Purification Method:

Protein A purification

CloneNo.:

241594C2

Applications

Tested Applications:

Cytometric bead array, Sandwich ELISA, Indirect ELISA, Sample test

Species Specificity:

human

Background Information

Storage

Storage:

Store at -80°C.

The product is shipped with ice packs. Upon receipt, store it immediately at -80°C

Storage Buffer:

PBS only, pH7.3

For technical support and original validation data for this product please contact:

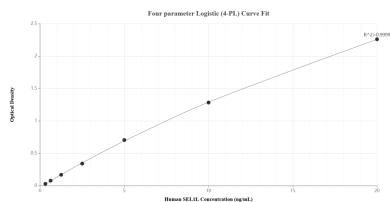
T: 4006900926

E: Proteintech-CN@ptglab.com

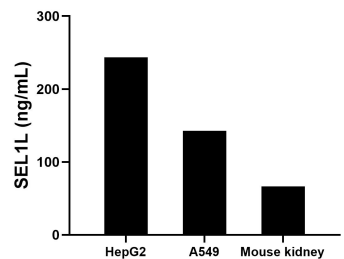
W: ptgcn.com

This product is exclusively available under Proteintech Group brand and is not available to purchase from any other manufacturer.

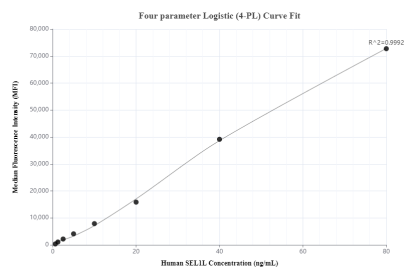
Selected Validation Data



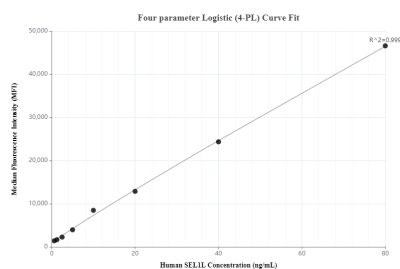
Sandwich ELISA standard curve of MP01186-1, Human SEL1L Recombinant Matched Antibody Pair - PBS only. 84317-5-PBS was coated to a plate as the capture antibody and incubated with serial dilutions of standard Ag32178. 84317-2-PBS was HRP conjugated as the detection antibody. Range: 0.313-20 ng/mL.



The mean SEL1L concentration was determined to be 243.66 ng/mL in HepG2 cell extract based on a 2.30 mg/mL extract load, 142.85 ng/mL in A549 cell extract based on a 2.70 mg/mL extract load and 66.47 ng/mL in mouse kidney tissue extract based on a 3.10 mg/mL extract load.



Cytometric bead array standard curve of MP01186-1, SEL1L Recombinant Matched Antibody Pair, PBS Only. Capture antibody: 84317-5-PBS. Detection antibody: 84317-2-PBS. Standard: Ag32178. Range: 0.625-80 ng/mL.



Cytometric bead array standard curve of MP01186-3, SEL1L Recombinant Matched Antibody Pair, PBS Only. Capture antibody: 84317-4-PBS. Detection antibody: 84317-2-PBS. Standard: Ag32178. Range: 0.625-80 ng/mL.