

For Research Use Only

# MATN1 Recombinant antibody

Catalog Number: 84313-1-RR



## Basic Information

<b>Catalog Number:</b> 84313-1-RR	<b>GenBank Accession Number:</b> NM_002379	<b>Purification Method:</b> Protein A purification
<b>Size:</b> 1000 µg/ml	<b>GeneID (NCBI):</b> 4146	<b>CloneNo.:</b> 241643D1
<b>Source:</b> Rabbit	<b>UNIPROT ID:</b> P21941	<b>Recommended Dilutions:</b> WB 1:1000-1:4000
<b>Isotype:</b> IgG	<b>Full Name:</b> matrilin 1, cartilage matrix protein	
<b>Immunogen Catalog Number:</b> AG29386	<b>Calculated MW:</b> 54 kDa	
	<b>Observed MW:</b> 54 kDa	

## Applications

<b>Tested Applications:</b> WB, ELISA	<b>Positive Controls:</b> WB : mouse embryo tissue,
<b>Species Specificity:</b> human, mouse	

## Background Information

MATN1 (matrilin 1), also known as CMP. It is expected to be located in extracellular space, the protein is mainly expressed in cartilage tissue and retina tissue. Also, the protein is a member of von Willebrand factor A domain containing protein family. This family of proteins are thought to be involved in the formation of filamentous networks in the extracellular matrices of various tissues. Mutations of this gene have been associated with variety of inherited chondrodysplasias. It is reported that COMP and matrilin-1 elute together in the gel filtration of cartilage extracts and can be co-immunoprecipitated with the presence of calcium (PMID: 15075323). The calculated molecular weight of MATN1 is 54 kDa.

## Storage

**Storage:**  
Store at -20°C. Stable for one year after shipment.  
**Storage Buffer:**  
PBS with 0.02% sodium azide and 50% glycerol pH 7.3.  
Aliquoting is unnecessary for -20°C storage

For technical support and original validation data for this product please contact:

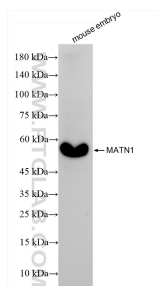
T: 4006900926

E: [Proteintech-CN@ptglab.com](mailto:Proteintech-CN@ptglab.com)

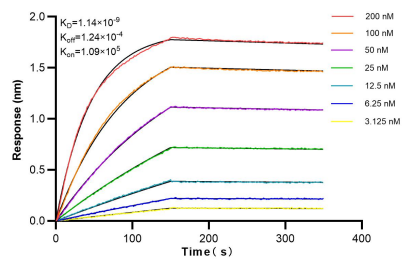
W: [ptgcn.com](http://ptgcn.com)

This product is exclusively available under Proteintech Group brand and is not available to purchase from any other manufacturer.

## Selected Validation Data



mouse embryo tissue were subjected to SDS PAGE followed by western blot with 84313-1-RR (MATN1 antibody) at dilution of 1:2000 incubated at room temperature for 1.5 hours.



Biolayer interferometry (BLI) kinetic assays of 84313-1-RR against Human MATN1 were performed. The affinity constant is 1.14 nM.