

For Research Use Only

MATN1 Recombinant antibody, PBS Only (Detector)

Catalog Number: 84313-1-PBS



Basic Information

Catalog Number:	GenBank Accession Number:	Purification Method:
84313-1-PBS	NM_002379	Protein A purification
Concentration:	GeneID (NCBI):	CloneNo.:
1 mg/ml	4146	241643D1
Source:	UNIPROT ID:	
Rabbit	P21941	
Isotype:	Full Name:	
IgG	matrilin 1, cartilage matrix protein	
Immunogen Catalog Number:	Calculated MW:	
AG29386	54 kDa	
	Observed MW:	
	54 kDa	

Applications

Tested Applications:
WB, Cytometric bead array, Indirect ELISA

Species Specificity:
human, mouse

Background Information

MATN1 (matrilin 1), also known as CMP. It is expected to be located in extracellular space, the protein is mainly expressed in cartilage tissue and retina tissue. Also, the protein is a member of von Willebrand factor A domain containing protein family. This family of proteins are thought to be involved in the formation of filamentous networks in the extracellular matrices of various tissues. Mutations of this gene have been associated with variety of inherited chondrodysplasias. It is reported that COMP and matrilin-1 elute together in the gel filtration of cartilage extracts and can be co-immunoprecipitated with the presence of calcium (PMID: 15075323). The calculated molecular weight of MATN1 is 54 kDa.

Storage

Storage:
Store at -80°C.
The product is shipped with ice packs. Upon receipt, store it immediately at -80°C

Storage Buffer:
PBS Only

For technical support and original validation data for this product please contact:

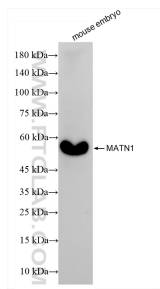
T: 4006900926

E: Proteintech-CN@ptglab.com

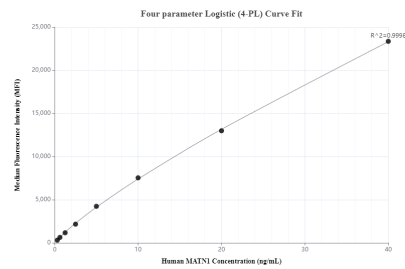
W: ptgcn.com

This product is exclusively available under Proteintech Group brand and is not available to purchase from any other manufacturer.

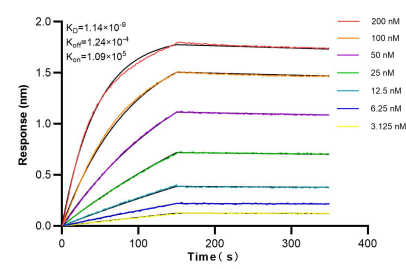
Selected Validation Data



mouse embryo tissue were subjected to SDS PAGE followed by western blot with 84313-1-RR (MATN1 antibody) at dilution of 1:2000 incubated at room temperature for 1.5 hours. This data was developed using the same antibody clone with 84313-1-PBS in a different storage buffer formulation.



Cytometric bead array standard curve of MP01215-1, MATN1 Recombinant Matched Antibody Pair, PBS Only. Capture antibody: 84313-2-PBS. Detection antibody: 84313-1-PBS. Standard: Ag29386. Range: 0.313-40 ng/mL.



Biolayer interferometry (BLI) kinetic assays of 84313-1-RR against Human MATN1 were performed. The affinity constant is 1.14 nM.