

For Research Use Only

# MAP2 Recombinant antibody, PBS Only

Catalog Number: 84306-4-PBS



## Basic Information

<b>Catalog Number:</b> 84306-4-PBS	<b>GenBank Accession Number:</b> BC038857	<b>Purification Method:</b> Protein A purification
<b>Size:</b> 1 mg/ml	<b>GeneID (NCBI):</b> 4133	<b>CloneNo.:</b> 241653H8
<b>Source:</b> Rabbit	<b>UNIPROT ID:</b> P11137	
<b>Isotype:</b> IgG	<b>Full Name:</b> microtubule-associated protein 2	
<b>Immunogen Catalog Number:</b> AG11580	<b>Calculated MW:</b> 200 kDa	
	<b>Observed MW:</b> 280-300 kDa, 70-85 kDa	

## Applications

**Tested Applications:**  
WB, IF/ICC, IF-P, IF-Fro, Indirect ELISA

**Species Specificity:**  
human

## Background Information

MAP2 (microtubule-associated protein 2) is a cytoskeleton protein abundant in the brain and has an important role in neuronal morphogenesis. Multiple high MW and low MW MAP2 isoforms are expressed within the proximal segment of axons, dendrites, and cell bodies. The expression of MAP2 is regulated in both a tissue- and developmentally-specific manner. The 280 kDa MAP2B is present throughout rat brain development, and the slightly larger MAP2A appears first during the end of the second week of postnatal life. MAP2C, composed of several bands of about 70 kDa, is present during early brain development and largely disappears from the mature brain except for the retina, olfactory bulb, and cerebellum. In addition, some isoforms with lower MW around 50-60 kDa also exist. MAP2 antibodies have been widely used to mark the neuron or dendrite formation.

## Storage

**Storage:**  
Store at -80°C.  
**The product is shipped with ice packs. Upon receipt, store it immediately at -80°C**

**Storage Buffer:**  
PBS Only

For technical support and original validation data for this product please contact:

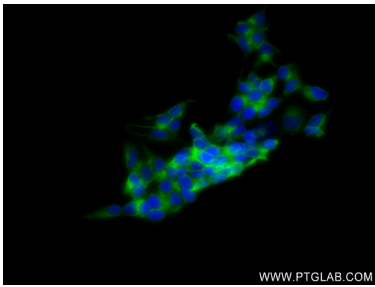
T: 4006900926

E: [Proteintech-CN@ptglab.com](mailto:Proteintech-CN@ptglab.com)

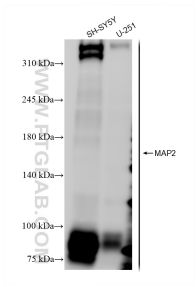
W: [ptgcn.com](http://ptgcn.com)

**This product is exclusively available under Proteintech Group brand and is not available to purchase from any other manufacturer.**

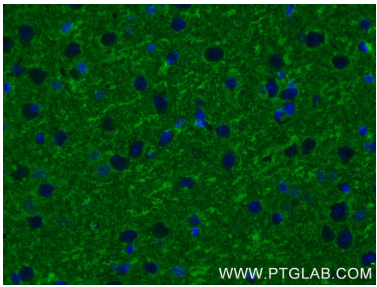
Selected Validation Data



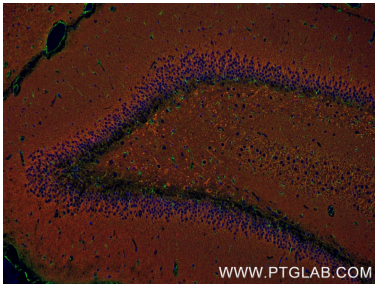
Immunofluorescent analysis of (4% PFA) fixed SH-SY5Y cells using MAP2 antibody (84306-4-RR, Clone: 241653H8 ) at dilution of 1:250 and CoraLite®488-Conjugated Goat Anti-Rabbit IgG(H+L) (SA00013-2). This data was developed using the same antibody clone with 84306-4-PBS in a different storage buffer formulation.



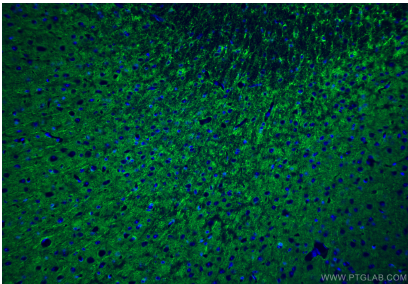
Various lysates were subjected to SDS PAGE followed by western blot with 84306-4-RR (MAP2 antibody) at dilution of 1:10000 incubated at room temperature for 1.5 hours. This data was developed using the same antibody clone with 84306-4-PBS in a different storage buffer formulation.



Immunofluorescent analysis of (4% PFA) fixed paraffin-embedded mouse brain tissue using MAP2 antibody (84306-4-RR, Clone: 241653H8 ) at dilution of 1:200 and CoraLite®488-Conjugated Goat Anti-Rabbit IgG(H+L) (SA00013-2). Heat mediated antigen retrieval with Tris-EDTA buffer (pH 9.0). This data was developed using the same antibody clone with 84306-4-PBS in a different storage buffer formulation.



Immunofluorescent analysis of (4% PFA) fixed paraffin-embedded rat brain tissue using MAP2 antibody (84306-4-RR, Clone: 241653H8,red ) at dilution of 1:210 and FlexAble CoraLite® Plus 594 Antibody Labeling Kit for Rabbit IgG(KFA009), GFAP antibody (81063-1-RR, Clone: 4C6, green) at dilution of 1:250 and CoraLite®488-Conjugated Goat Anti-Rabbit IgG(H+L) (SA00013-2). Heat mediated antigen retrieval with Tris-EDTA buffer (pH 9.0). This data was



Immunofluorescent analysis of (4% PFA) fixed frozen OCT-embedded mouse brain tissue using MAP2 antibody (84306-4-RR, Clone: 241653H8 ) at dilution of 1:200 and CoraLite®488-Conjugated Goat Anti-Rabbit IgG(H+L) (SA00013-2). This data was developed using the same antibody clone with 84306-4-PBS in a different storage buffer formulation.