

For Research Use Only

MAP2 Recombinant antibody, PBS Only (Detector)

Catalog Number: 84306-3-PBS



Basic Information

Catalog Number:	84306-3-PBS	GenBank Accession Number:	BC038857	Purification Method:	Protein A purification
Concentration:	1 mg/ml	GeneID (NCBI):	4133	CloneNo.:	241653E9
Source:	Rabbit	UNIPROT ID:	P11137		
Isotype:	IgG	Full Name:	microtubule-associated protein 2		
Immunogen Catalog Number:	AG11580	Calculated MW:	200 kDa		
		Observed MW:	280-300 kDa, 70-85 kDa		

Applications

Tested Applications:
WB, IHC, IF-P, IF-Fro, Cytometric bead array, Sandwich ELISA, Indirect ELISA, Sample test

Species Specificity:
human, mouse, rat

Background Information

MAP2 (microtubule-associated protein 2) is a cytoskeleton protein abundant in the brain and has an important role in neuronal morphogenesis. Multiple high MW and low MW MAP2 isoforms are expressed within the proximal segment of axons, dendrites, and cell bodies. The expression of MAP2 is regulated in both a tissue- and developmentally-specific manner. The 280 kDa MAP2B is present throughout rat brain development, and the slightly larger MAP2A appears first during the end of the second week of postnatal life. MAP2C, composed of several bands of about 70 kDa, is present during early brain development and largely disappears from the mature brain except for the retina, olfactory bulb, and cerebellum. In addition, some isoforms with lower MW around 50-60 kDa also exist. MAP2 antibodies have been widely used to mark the neuron or dendrite formation.

Storage

Storage:
Store at -80°C.
The product is shipped with ice packs. Upon receipt, store it immediately at -80°C

Storage Buffer:
PBS Only

For technical support and original validation data for this product please contact:

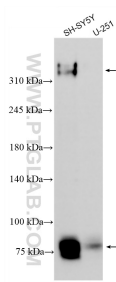
T: 4006900926

E: Proteintech-CN@ptglab.com

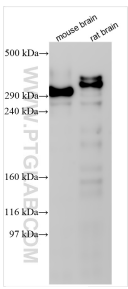
W: ptgcn.com

This product is exclusively available under Proteintech Group brand and is not available to purchase from any other manufacturer.

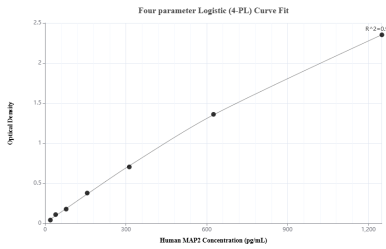
Selected Validation Data



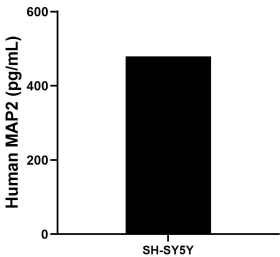
SH-SY5Y cells were subjected to SDS PAGE followed by western blot with 84306-3-RR (MAP2 antibody) at dilution of 1:2000 incubated at room temperature for 1.5 hours. This data was developed using the same antibody clone with 84306-3-PBS in a different storage buffer formulation.



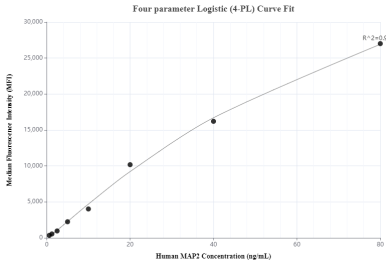
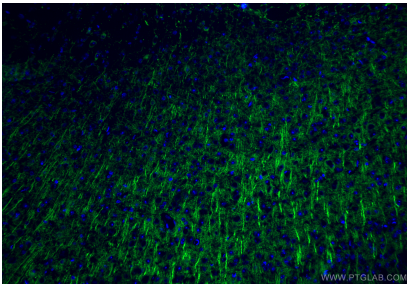
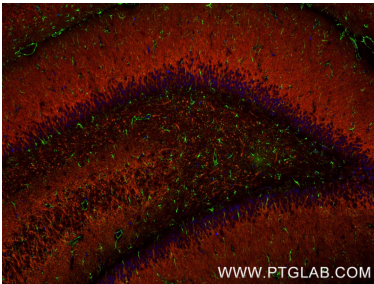
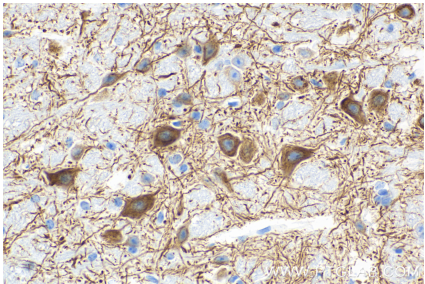
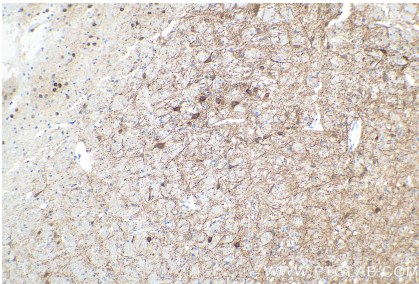
Various lysates were subjected to SDS PAGE followed by western blot with 84306-3-RR (MAP2 antibody) at dilution of 1:1000 incubated at room temperature for 1.5 hours. This data was developed using the same antibody clone with 84306-3-PBS in a different storage buffer formulation.



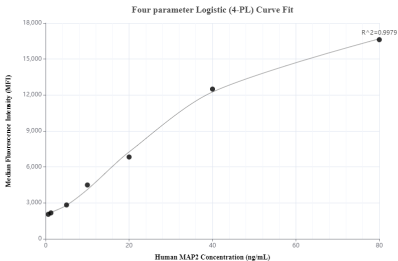
Sandwich ELISA standard curve of MP01208-3, Human MAP2 Recombinant Matched Antibody Pair - PBS only. 84306-5-PBS was coated to a plate as the capture antibody and incubated with serial dilutions of standard Ag11580. 84306-3-PBS was HRP conjugated as the detection antibody. Range: 19.5-1250 pg/mL



The mean MAP2 concentration was determined to be 479.14 pg/mL in SH-SY5Y cell extract based on a 1.0 mg/mL extract load.



Immunofluorescent analysis of (4% PFA) fixed paraffin-embedded rat brain tissue using GFAP antibody (81063-1-RR, Clone: 4C6, green) at dilution of 1:250 and Coralite® 488-Conjugated Goat Anti-Rabbit IgG(H+L) (SA00013-2). MAP2 antibody (84306-3-RR, Clone: 241653E9, red) at dilution of 1:210 and FlexAble Coralite® Plus 594 Antibody Labeling Kit for Rabbit IgG(KFA009). Heat mediated antigen retrieval with Tris-EDTA buffer (pH 9.0). This data was developed using the same antibody clone with 84306-3-PBS in a different storage buffer formulation.



Immunofluorescent analysis of (4% PFA) fixed frozen OCT-embedded mouse brain tissue using MAP2 antibody (84306-3-RR, Clone: 241653E9) at dilution of 1:200 and Coralite® 488-Conjugated Goat Anti-Rabbit IgG(H+L) (SA00013-2). This data was developed using the same antibody clone with 84306-3-PBS in a different storage buffer formulation.

Cytometric bead array standard curve of MP01208-1, MAP2 Recombinant Matched Antibody Pair, PBS Only. Capture antibody: 84306-2-PBS. Detection antibody: 84306-3-PBS. Standard: Ag11580. Range: 0.625-80 ng/mL

Cytometric bead array standard curve of MP01208-2, MAP2 Recombinant Matched Antibody Pair, PBS Only. Capture antibody: 84306-1-PBS. Detection antibody: 84306-3-PBS. Standard: Ag11580. Range: 0.625-80 ng/mL