

For Research Use Only

STUB1 Recombinant antibody, PBS Only

Catalog Number: 84301-1-PBS



Basic Information

Catalog Number:

84301-1-PBS

Size:

1 mg/ml

Source:

Rabbit

Isotype:

IgG

GenBank Accession Number:

NM_005861

GeneID (NCBI):

10273

UNIPROT ID:

Q9UNE7

Full Name:

STIP1 homology and U-box
containing protein 1

Calculated MW:

35 kDa

Observed MW:

35 kDa

Purification Method:

Protein A purification

CloneNo.:

241200D7

Applications

Tested Applications:

WB, Indirect ELISA

Species Specificity:

human

Background Information

STUB1, also named as CHIP, SDCCAG7, UBOX1 and NY-CO-7, is a E3 ubiquitin-protein ligase which targets misfolded chaperone substrates towards proteasomal degradation. STUB1/CHIP modulates the activity of several chaperone complexes, including Hsp70, Hsc70 and Hsp90. It mediates transfer of non-canonical short ubiquitin chains to HSPA8 that have no effect on HSPA8 degradation. STUB1/CHIP mediates polyubiquitination of CYP3A4. (PMID:10330192) CHIP/STUB1 strongly reduced keratin aggregates through increased degradation of mutant K14. (PMID:20151404) STUB1/CHIP regulates NAD(P)H:quinone oxidoreductase 1 (NQO1) accumulation in aged brain, a process impaired in certain Alzheimer patients. (PMID:21220432) This antibody is specific to STUB1.

Storage

Storage:

Store at -80°C.

The product is shipped with ice packs. Upon receipt, store it immediately at -80°C

Storage Buffer:

PBS Only

For technical support and original validation data for this product please contact:

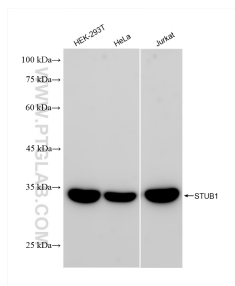
T: 4006900926

E: Proteintech-CN@ptglab.com

W: ptgcn.com

This product is exclusively available under Proteintech Group brand and is not available to purchase from any other manufacturer.

Selected Validation Data



HEK-293T cells were subjected to SDS PAGE followed by western blot with 84301-1-RR (STUB1 antibody) at dilution of 1:5000 incubated at room temperature for 1.5 hours. This data was developed using the same antibody clone with 84301-1-PBS in a different storage buffer formulation.