

For Research Use Only

PTBP2 Recombinant antibody, PBS Only (Capture)

Catalog Number: 84300-2-PBS



Basic Information

Catalog Number:

84300-2-PBS

Size:

1 mg/ml

Source:

Rabbit

Isotype:

IgG

GenBank Accession Number:

NM_021190

GeneID (NCBI):

58155

UNIPROT ID:

Q9UKA9

Full Name:

polypyrimidine tract binding protein

2

Calculated MW:

57 kDa

Purification Method:

Protein A purification

CloneNo.:

241286E6

Applications

Tested Applications:

Sandwich ELISA, Indirect ELISA, Sample test

Species Specificity:

human

Background Information

Storage

Storage:

Store at -80°C.

The product is shipped with ice packs. Upon receipt, store it immediately at -80°C

Storage Buffer:

PBS Only

For technical support and original validation data for this product please contact:

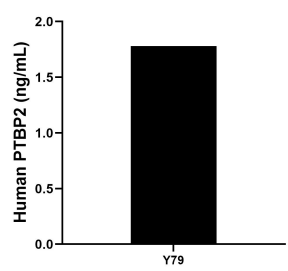
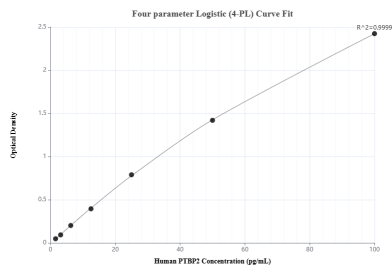
T: 4006900926

E: Proteintech-CN@ptglab.com

W: ptgcn.com

This product is exclusively available under Proteintech Group brand and is not available to purchase from any other manufacturer.

Selected Validation Data



Sandwich ELISA standard curve of MP01460-1, Human PTBP2 Recombinant Matched Antibody Pair - PBS only. 84300-2-PBS was coated to a plate as the capture antibody and incubated with serial dilutions of standard SY01240. 84300-3-PBS was HRP conjugated as the detection antibody. Range: 1.56-100 pg/mL

The mean PTBP2 concentration was determined to be 1.78 ng/mL in Y79 cell extract based on a 1.3 mg/mL extract load.