

For Research Use Only

# CD177 Recombinant antibody, PBS Only (Detector)

Catalog Number: 84293-1-PBS



## Basic Information

Catalog Number:

84293-1-PBS

Concentration:

1 mg/ml

Source:

Rabbit

Isotype:

IgG

GenBank Accession Number:

BC029167

GeneID (NCBI):

57126

UNIPROT ID:

Q8N6Q3

Full Name:

CD177 molecule

Calculated MW:

437 aa, 46 kDa

Purification Method:

Protein A purification

CloneNo.:

241339E6

## Applications

Tested Applications:

Cytometric bead array, Sandwich ELISA, Indirect ELISA, Sample test

Species Specificity:

human

## Background Information

### Storage

Storage:

Store at -80°C.

**The product is shipped with ice packs. Upon receipt, store it immediately at -80°C**

Storage Buffer:

PBS only, pH7.3

For technical support and original validation data for this product please contact:

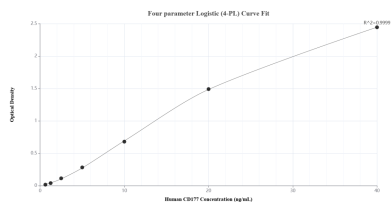
T: 4006900926

E: [Proteintech-CN@ptglab.com](mailto:Proteintech-CN@ptglab.com)

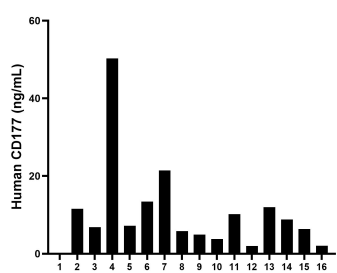
W: [ptgcn.com](http://ptgcn.com)

**This product is exclusively available under Proteintech Group brand and is not available to purchase from any other manufacturer.**

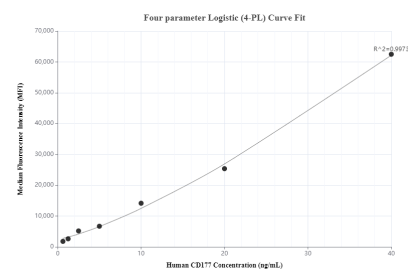
## Selected Validation Data



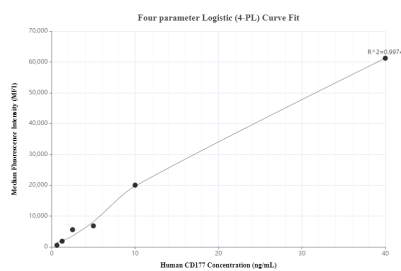
Sandwich ELISA standard curve of MP01180-2, Human CD177 Recombinant Matched Antibody Pair - PBS only. 84293-2-PBS was coated to a plate as the capture antibody and incubated with serial dilutions of standard RP02353. 84293-1-PBS was HRP conjugated as the detection antibody. Range: 0.625-40 ng/mL.



Serum of sixteen individual healthy human donors was measured. The CD177 concentration of detected samples was determined to be 10.42 ng/mL with a range of ND-50.27 ng/mL.



Cytometric bead array standard curve of MP01180-2, CD177 Recombinant Matched Antibody Pair, PBS Only. Capture antibody: 84293-2-PBS. Detection antibody: 84293-1-PBS. Standard: RP02353. Range: 0.625-40 ng/mL.



Cytometric bead array standard curve of MP01180-3, CD177 Recombinant Matched Antibody Pair, PBS Only. Capture antibody: 84293-3-PBS. Detection antibody: 84293-1-PBS. Standard: RP02353. Range: 0.625-40 ng/mL.