

For Research Use Only

ADAM17 Recombinant antibody, PBS Only (Detector)

Catalog Number: 84292-4-PBS



Basic Information

Catalog Number: 84292-4-PBS	GenBank Accession Number: BC136783	Purification Method: Protein A purification
Concentration: 1 mg/ml	GeneID (NCBI): 6868	CloneNo.: 241305A2
Source: Rabbit	UNIPROT ID: P78536	
Isotype: IgG	Full Name: ADAM metalloproteinase domain 17	
Immunogen Catalog Number: AG32418	Calculated MW: 824 aa, 93 kDa	

Applications

Tested Applications:
WB, IHC, FC (Intra), Sandwich ELISA, Indirect ELISA,
Sample test

Species Specificity:
human, mouse

Background Information

The ADAMs (A Disintegrin And Metalloprotease) are multidomain transmembrane proteins. One of the first ADAMs implicated in membrane shedding is ADAM-17, which is shown to release the active form of tumor necrosis factor (TNF)-α from its precursor (PMID:18238782). ADAM17 is also named as CSV, TACE. The full length protein has 9 glycosylation sites, a signal peptide, propeptide and 2 isoforms produced by alternative splicing. The 120-kDa form of ADAM-17 is expressed more frequently and at higher levels in primary breast carcinomas compared with normal breast tissue (PMID:17438092).

Storage

Storage:
Store at -80°C.
The product is shipped with ice packs. Upon receipt, store it immediately at -80°C

Storage Buffer:
PBS only, pH7.3

For technical support and original validation data for this product please contact:

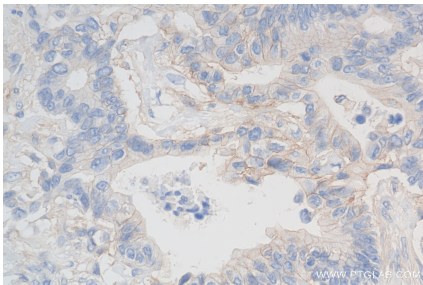
T: 4006900926

E: Proteintech-CN@ptglab.com

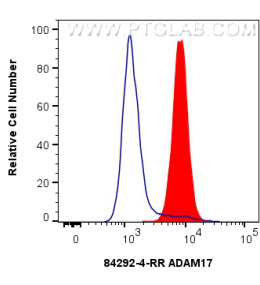
W: ptgcn.com

This product is exclusively available under Proteintech Group brand and is not available to purchase from any other manufacturer.

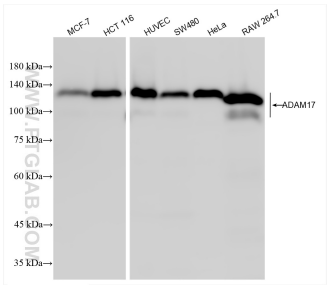
Selected Validation Data



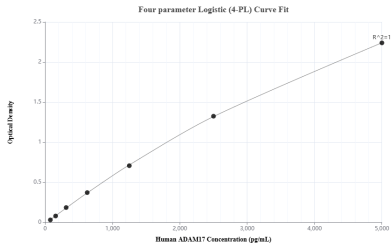
Immunohistochemical analysis of paraffin-embedded human rectal cancer tissue slide using 84292-4-RR (ADAM17 antibody) at dilution of 1:500 (under 40x lens). Heat mediated antigen retrieval with Tris-EDTA buffer (pH 9.0). This data was developed using the same antibody clone with 84292-4-PBS in a different storage buffer formulation.



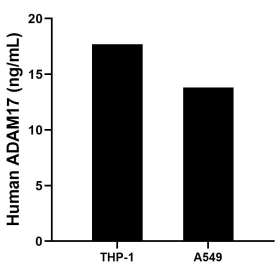
1x10⁶ HCT 116 cells were intracellularly stained with 0.25 ug ADAM17 Recombinant antibody (84292-4-RR, Clone:241305A2) and CoraLite®488-Conjugated Goat Anti-Rabbit IgG(H+L) (SA00013-2)(red), or 0.25 ug Rabbit IgG Isotype Control RecAb (98136-1-RR, Clone: 240953C9) (blue). Cells were fixed with 4% PFA and permeabilized with Flow Cytometry Perm Buffer (PF00011-C). This data was developed using the same antibody clone with 84292-4-PBS in a different storage buffer



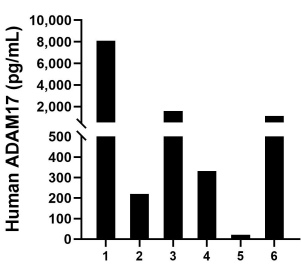
Various lysates were subjected to SDS PAGE followed by western blot with 84292-4-RR (ADAM17 antibody) at dilution of 1:5000 incubated at room temperature for 1.5 hours. This data was developed using the same antibody clone with 84292-4-PBS in a different storage buffer formulation.



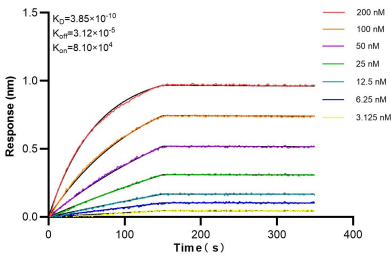
Sandwich ELISA standard curve of MP01169-3, Human ADAM17 Recombinant Matched Antibody Pair - PBS only. 84292-3-PBS was coated to a plate as the capture antibody and incubated with serial dilutions of standard Ag32418. 84292-4-PBS was HRP conjugated as the detection antibody. Range: 78.1-5000 pg/mL



The mean ADAM17 concentration was determined to be 18.51 ng/mL in THP-1 cell extract based on a 4.4 mg/mL extract load and 13.76 ng/mL in A549 cell extract based on a 2.7 mg/mL extract load.



Serum of six individual healthy human donors was measured. The human ADAM17 concentration of detected samples was determined to be 1,898.9 pg/mL with a range of 21.5 - 8,096.2 ng/mL



Biolayer interferometry (BLI) kinetic assays of 84292-4-RR against Human ADAM17 were performed. The affinity constant is 0.385 nM.