

For Research Use Only

# Ch-TOG Recombinant monoclonal antibody, PBS Only (Detector)

Catalog Number: 84285-3-PBS



## Basic Information

Catalog Number: 84285-3-PBS	GenBank Accession Number: BC120869	Purification Method: Protein A purification
Source: Rabbit	GeneID (NCBI): 9793	CloneNo.: 241546G8
Isotype: IgG	UNIPROT ID: Q14008	
Immunogen Catalog Number: AG24875	Full Name: cytoskeleton associated protein 5	
	Observed MW: 220 kDa	

## Applications

**Tested Applications:**  
WB, IHC, IF/ICC, FC (Intra), Cytometric bead array,  
Indirect ELISA

**Species Specificity:**  
human

## Background Information

Ch-TOG (colonic hepatic tumor-overexpressed gene), also known as XMAP215 or CKAP5, is a microtubule polymerase which can promotes cytoplasmic microtubule nucleation and elongation. Through interacting with Aurora-A and TACC3, it plays a major role in organizing spindle poles.

## Storage

**Storage:**  
Store at -80°C.  
**The product is shipped with ice packs. Upon receipt, store it immediately at -80°C**

**Storage Buffer:**  
PBS only, pH7.3

For technical support and original validation data for this product please contact:

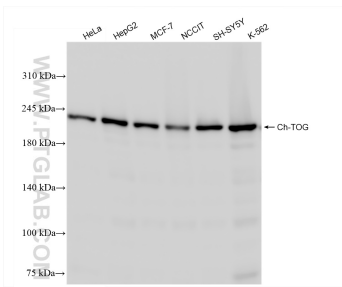
T: 4006900926

E: [Proteintech-CN@ptglab.com](mailto:Proteintech-CN@ptglab.com)

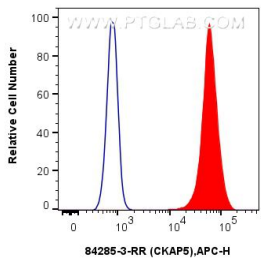
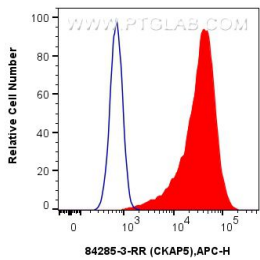
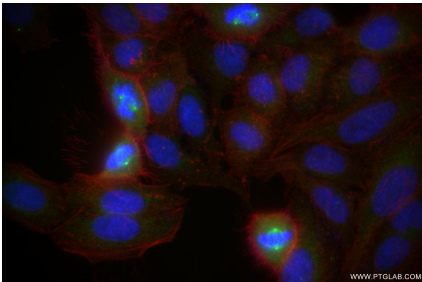
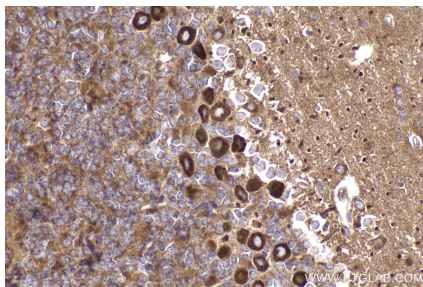
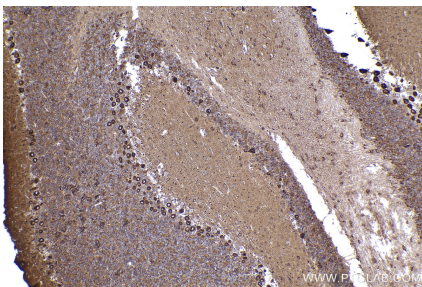
W: [ptgcn.com](http://ptgcn.com)

**This product is exclusively available under Proteintech Group brand and is not available to purchase from any other manufacturer.**

## Selected Validation Data



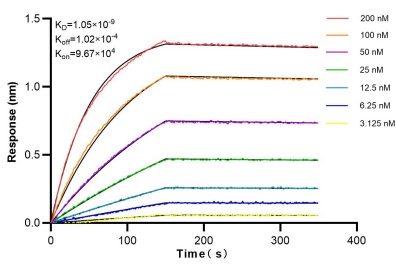
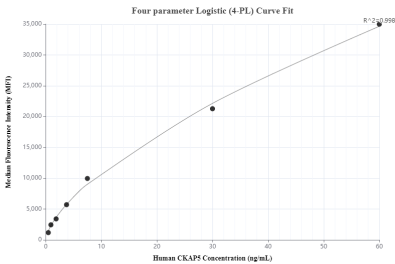
Various lysates were subjected to SDS PAGE followed by western blot with 84285-3-RR (Ch-TOG antibody) at dilution of 1:10000 incubated at room temperature for 1.5 hours. This data was developed using the same antibody clone with 84285-3-PBS in a different storage buffer formulation.



Immunofluorescent analysis of (4% PFA) fixed HepG2 cells using Ch-TOG antibody (84285-3-RR, Clone: 241546G8) at dilution of 1:200 and CoraLite@488-Conjugated Goat Anti-Rabbit IgG(H+L) (SA00013-2), CL594-Phalloidin (red). This data was developed using the same antibody clone with 84285-3-PBS in a different storage buffer formulation.

1x10<sup>6</sup> HeLa cells were intracellularly stained with 0.25 ug Ckap5 Recombinant Antibody (84285-3-RR, Clone:241546G8) and APC-Conjugated Goat Anti-Rabbit IgG(H+L)(red), or 0.25 ug Isotype Control (blue). Cells were fixed with 4% PFA and permeabilized with Flow Cytometry Perm Buffer. This data was developed using the same antibody clone with 84285-3-PBS in a different storage buffer formulation.

1x10<sup>6</sup> A549 cells were intracellularly stained with 0.25 ug Ckap5 Recombinant Antibody (84285-3-RR, Clone:241546G8) and APC-Conjugated Goat Anti-Rabbit IgG(H+L)(red), or 0.25 ug Isotype Control (blue). Cells were fixed with 4% PFA and permeabilized with Flow Cytometry Perm Buffer. This data was developed using the same antibody clone with 84285-3-PBS in a different storage buffer formulation.



Cytometric bead array standard curve of MP01203-1, Ch-TOG Recombinant Matched Antibody Pair, PBS Only. Capture antibody: 84285-1-PBS. Detection antibody: 84285-3-PBS. Standard: Ag24875. Range: 0.469-60 ng/mL.

Biolayer interferometry (BLI) kinetic assays of 84285-3-RR against Human Ch-TOG were performed. The affinity constant is 1.05 nM.