

For Research Use Only

# PFKM Recombinant antibody, PBS Only (Detector)

Catalog Number: 84281-5-PBS



## Basic Information

Catalog Number:	84281-5-PBS	GenBank Accession Number:	BC021203	Purification Method:	Protein A purification
Concentration:	1 mg/ml	GeneID (NCBI):	5213	CloneNo.:	241598B2
Source:	Rabbit	UNIPROT ID:	P08237		
Isotype:	IgG	Full Name:	phosphofructokinase, muscle		
Immunogen Catalog Number:	AG30840	Observed MW:	75-85 kDa		

## Applications

**Tested Applications:**  
WB, IHC, IF/ICC, Cytometric bead array, Indirect ELISA

**Species Specificity:**  
human, mouse

## Background Information

PFKM, also named as GSD7, PFK-1, PFK-M and PFKX, belongs to the phosphofructokinase family and two domains subfamily. PFKM catalyzes the reaction: ATP + D-fructose 6-phosphate = ADP + D-fructose 1,6-bisphosphate. It is a key regulatory enzyme in glycolysis. Defects in PFKM cause glycogen storage disease type 7 (GSD7). PFKM has three isoforms with molecular weights of 85, 82, and 93 kDa.

## Storage

**Storage:**  
Store at -80°C.  
**The product is shipped with ice packs. Upon receipt, store it immediately at -80°C**

**Storage Buffer:**  
PBS only, pH7.3

For technical support and original validation data for this product please contact:

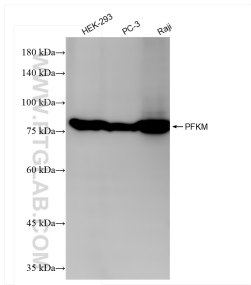
T: 4006900926

E: Proteintech-CN@ptglab.com

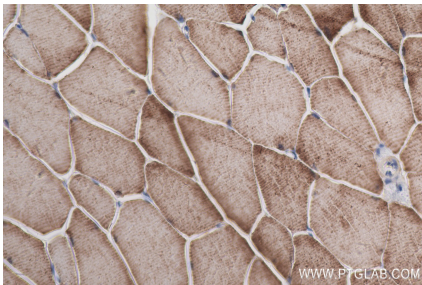
W: ptgcn.com

**This product is exclusively available under Proteintech Group brand and is not available to purchase from any other manufacturer.**

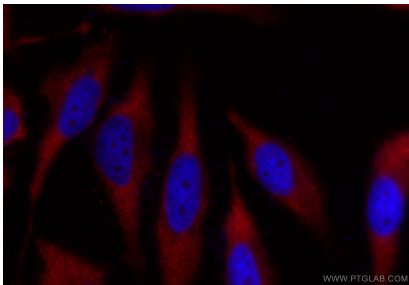
## Selected Validation Data



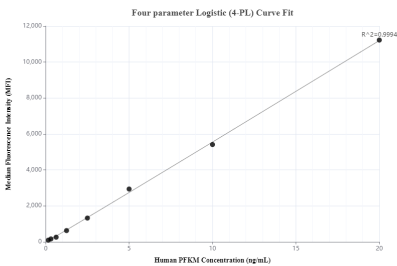
Various lysates were subjected to SDS PAGE followed by western blot with 84281-5-RR (PFKM antibody) at dilution of 1:10000 incubated at room temperature for 1.5 hours. This data was developed using the same antibody clone with 84281-5-PBS in a different storage buffer formulation.



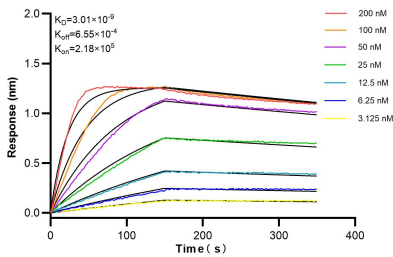
Immunohistochemical analysis of paraffin-embedded mouse skeletal muscle tissue slide using 84281-5-RR (PFKM antibody) at dilution of 1:600 (under 40x lens). Heat mediated antigen retrieval with Tris-EDTA buffer (pH 9.0). This data was developed using the same antibody clone with 84281-5-PBS in a different storage buffer formulation.



Immunofluorescent analysis of (-20°C Ethanol) fixed HeLa cells using PFKM antibody (84281-5-RR, Clone: 241598B2 ) at dilution of 1:500 and CoraLite®594-Conjugated Goat Anti-Rabbit IgG(H+L) (SA00013-4). This data was developed using the same antibody clone with 84281-5-PBS in a different storage buffer formulation.



Cytometric bead array standard curve of MP01204-3, PFKM Recombinant Matched Antibody Pair, PBS Only. Capture antibody: 84281-4-PBS. Detection antibody: 84281-5-PBS. Standard: Ag30840. Range: 0.156-20 ng/mL



Biolayer interferometry (BLI) kinetic assays of 84281-5-RR against Human PFKM were performed. The affinity constant is 3.01 nM.