

For Research Use Only

TRAIL/CD253 Recombinant antibody, PBS Only (Capture)

Catalog Number: 84280-2-PBS



Basic Information

Catalog Number:

84280-2-PBS

Concentration:

1 mg/ml

Source:

Rabbit

Isotype:

IgG

GenBank Accession Number:

BC032722

GeneID (NCBI):

8743

UNIPROT ID:

P50591

Full Name:

tumor necrosis factor (ligand)
superfamily, member 10

Calculated MW:

281 aa, 33 kDa

Purification Method:

Protein A purification

CloneNo.:

241419A2

Applications

Tested Applications:

Cytometric bead array, Sandwich ELISA, Indirect ELISA,
Sample test

Species Specificity:

human

Background Information

Storage

Storage:

Store at -80°C.

The product is shipped with ice packs. Upon receipt, store it immediately at -80°C

Storage Buffer:

PBS only, pH7.3

For technical support and original validation data for this product please contact:

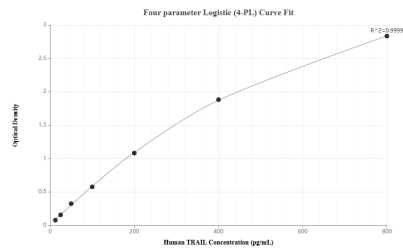
T: 4006900926

E: Proteintech-CN@ptglab.com

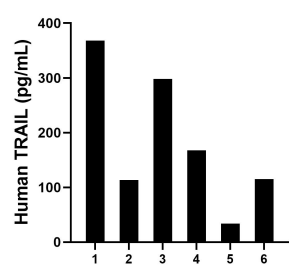
W: ptgcn.com

This product is exclusively available under Proteintech Group brand and is not available to purchase from any other manufacturer.

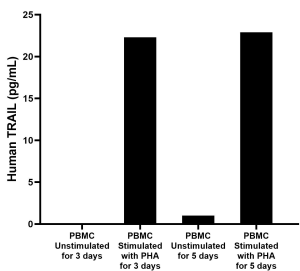
Selected Validation Data



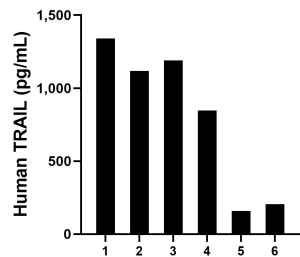
Sandwich ELISA standard curve of MP01166-1, Human TRAIL Recombinant Matched Antibody Pair - PBS only. 84280-2-PBS was coated to a plate as the capture antibody and incubated with serial dilutions of standard RPO2339. 84280-1-PBS was HRP conjugated as the detection antibody. Range: 12.5-800 pg/mL



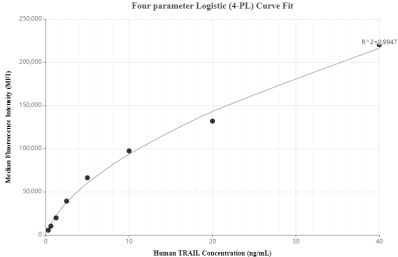
Serum of six individual healthy human donors was measured. The human TRAIL concentration of detected samples was determined to be 182.8 pg/mL with a range of 33.7 - 368.3 pg/mL



Human peripheral blood mononuclear cells (PBMC) were cultured unstimulated or stimulated with 10 μ g/mL PHA for 3 days or 5 days. For the PBMC supernatant cultured for 3 days, the mean TRAIL concentration was undetectable in unstimulated PBMC supernatant, 22.3 pg/mL in PHA stimulated PBMC supernatant. For the PBMC supernatant cultured for 5 days, the mean TRAIL concentration was determined to be 1.0 pg/mL in unstimulated PBMC supernatant, 22.9



Saliva of six individual healthy human donors was measured. The human TRAIL concentration of detected samples was determined to be 809.9 pg/mL with a range of 159.6 - 1,340.0 pg/mL



Cytometric bead array standard curve of MP01166-1, TRAIL Recombinant Matched Antibody Pair, PBS Only. Capture antibody: 84280-2-PBS. Detection antibody: 84280-1-PBS. Standard: RPO2339. Range: 0.313-40 ng/mL

