

For Research Use Only

FAT1 Recombinant antibody, PBS Only (Detector)

Catalog Number: 84279-3-PBS



Basic Information

Catalog Number:	84279-3-PBS	GenBank Accession Number:	Purification Method:
Concentration:	1 mg/ml	GeneID (NCBI):	Protein A purification
Source:	Rabbit	2195	CloneNo.:
Isotype:	IgG	UNIPROT ID:	241602F9
Immunogen Catalog Number:	AG33957	Q14517	
		Full Name:	
		FAT tumor suppressor homolog 1	
		(Drosophila)	
		Observed MW:	
		506-600 kDa	

Applications

Tested Applications:
WB, Cytometric bead array, Indirect ELISA

Species Specificity:
human

Background Information

FAT1, also known as hFat1, belongs to a member of the cadherin superfamily, has been proposed to play roles in cerebral development, glomerular slit formation, and also to act as a tumor suppressor, but its mechanisms of action have not been elucidated. It is expected to be located in cell membrane and nucleus, which is expressed in many epithelial and some endothelial and smooth muscle cells. The calculated molecular weight of FAT1 is 506 kDa and there is glycosylation modification of the protein. To examine functions of the transmembrane and cytoplasmic domains, they were expressed in HEK-293 and HeLa cells as chimeric proteins in fusion with EGFP and extracellular domains derived from E-cadherin. Proteins comprising the transmembrane domain localized to the membrane fraction (PMID: 15922730, 26373379).

Storage

Storage:
Store at -80°C.

The product is shipped with ice packs. Upon receipt, store it immediately at -80°C

Storage Buffer:
PBS Only

For technical support and original validation data for this product please contact:

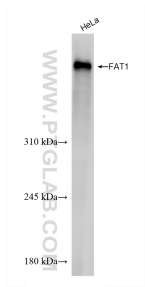
T: 4006900926

E: Proteintech-CN@ptglab.com

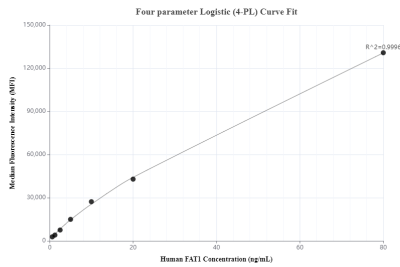
W: ptgcn.com

This product is exclusively available under Proteintech Group brand and is not available to purchase from any other manufacturer.

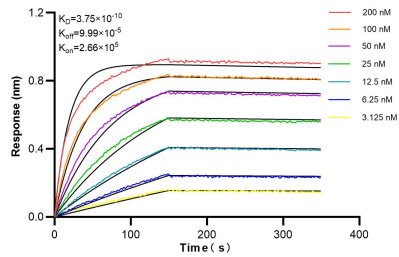
Selected Validation Data



HeLa cells were subjected to SDS PAGE followed by western blot with 84279-3-RR (FAT1 antibody) at dilution of 1:20000 incubated at room temperature for 1.5 hours. This data was developed using the same antibody clone with 84279-3-PBS in a different storage buffer formulation.



Cytometric bead array standard curve of MP01192-3, FAT1 Recombinant Matched Antibody Pair, PBS Only. Capture antibody: 84279-4-PBS. Detection antibody: 84279-3-PBS. Standard: Ag33957. Range: 0.625-80 ng/mL.



Biolayer interferometry (BLI) kinetic assays of 84279-3-RR against Human FAT1 were performed. The affinity constant is 0.375 nM.