

For Research Use Only

# NME3 Recombinant antibody, PBS Only (Detector)

Catalog Number: 84278-4-PBS



## Basic Information

Catalog Number: 84278-4-PBS	GenBank Accession Number: BC000250	Purification Method: Protein A purification
Size: 1 mg/ml	GeneID (NCBI): 4832	CloneNo.: 241585G8
Source: Rabbit	UNIPROT ID: Q13232	
Isotype: IgG	Full Name: non-metastatic cells 3, protein expressed in	
Immunogen Catalog Number: AG7284	Calculated MW: 19 kDa	

## Applications

**Tested Applications:**  
Cytometric bead array, Sandwich ELISA, Indirect ELISA,  
Sample test

**Species Specificity:**  
human

## Background Information

NME3 (NME/NM23 Nucleoside Diphosphate Kinase 3), also named as NM23-H3; DR-NM23, is a member of the nucleoside diphosphate kinase (NDPK) family that binds to the mitochondrial outer membrane to stimulate mitochondrial fusion. The depletion of NME3 will cause dysfunction in mitochondrial dynamics. NME3 has been found to facilitate DNA-repair mechanisms binds to several NPHPs, including NEK8, CEP164, and ankyrin repeat and sterile  $\alpha$  motif domain-containing 6 (ANKS6).

## Storage

**Storage:**  
Store at -80°C.  
**The product is shipped with ice packs. Upon receipt, store it immediately at -80°C**

**Storage Buffer:**  
PBS Only

For technical support and original validation data for this product please contact:

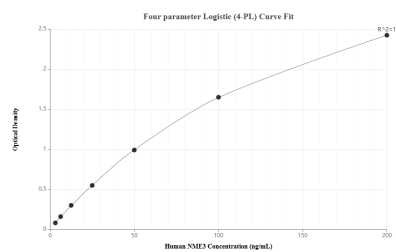
T: 4006900926

E: Proteintech-CN@ptglab.com

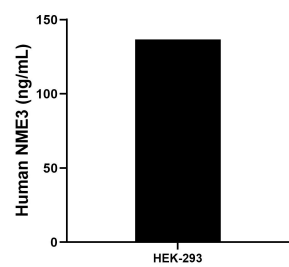
W: ptgcn.com

**This product is exclusively available under Proteintech Group brand and is not available to purchase from any other manufacturer.**

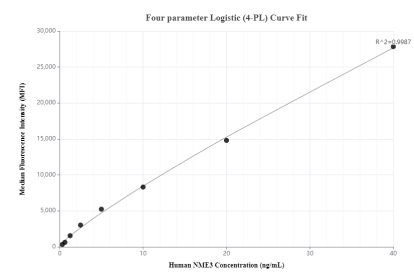
## Selected Validation Data



Sandwich ELISA standard curve of MP01200-3, Human NME3 Recombinant Matched Antibody Pair - PBS only. 84278-3-PBS was coated to a plate as the capture antibody and incubated with serial dilutions of standard Ag7284. 84278-4-PBS was HRP conjugated as the detection antibody. Range: 3.13-200 ng/mL



The mean NME3 concentration was determined to be 136.5 ng/mL in HEK-293 cell extract based on a 1.5 mg/mL extract load.



Cytometric bead array standard curve of MP01200-3, NME3 Recombinant Matched Antibody Pair, PBS Only. Capture antibody: 84278-3-PBS. Detection antibody: 84278-4-PBS. Standard: Ag7284. Range: 0.313-40 ng/mL