

For Research Use Only

METTL1 Recombinant antibody

Catalog Number: 84272-1-RR



Basic Information

Catalog Number:

84272-1-RR

Concentration:

1000 μ g/ml

Source:

Rabbit

Isotype:

IgG

Immunogen Catalog Number:

AG7055

GenBank Accession Number:

BC000550

GeneID (NCBI):

4234

UNIPROT ID:

Q9UBP6

Full Name:

methyltransferase like 1

Calculated MW:

31 kDa

Observed MW:

31-35 kDa

Purification Method:

Protein A purification

CloneNo.:

241108G8

Recommended Dilutions:

WB 1:5000-1:50000

IF/ICC 1:250-1:1000

Applications

Tested Applications:

WB, IF/ICC, FC (Intra), ELISA

Species Specificity:

human, mouse

Positive Controls:

WB : A549 cells, HeLa cells, HepG2 cells, Caco-2 cells, HuH-7 cells, mouse brain tissue

IF/ICC : A549 cells,

Background Information

METTL1 methyltransferase mediates m7G methylation within miRNAs and regulates cell migration via its catalytic activity. METTL1 can be inactivated by phosphorylation at Ser27 by protein kinase B (PKB α). Overexpression of METTL1 is widely observed among human cancers. It is also crucial for the regulation of chemoresistance in cancer treatment. In addition, mutations in the human N7-methylguanosine (m7G) methyltransferase complex METTL1/WDR4 cause primordial dwarfism and brain malformation.

Storage

Storage:

Store at -20°C. Stable for one year after shipment.

Storage Buffer:

PBS with 0.02% sodium azide and 50% glycerol pH 7.3.

Aliquoting is unnecessary for -20°C storage

For technical support and original validation data for this product please contact:

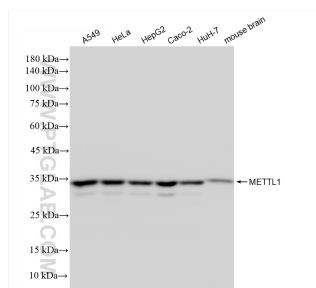
T: 4006900926

E: Proteintech-CN@ptglab.com

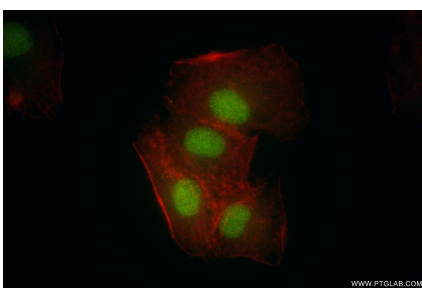
W: ptgcn.com

This product is exclusively available under Proteintech Group brand and is not available to purchase from any other manufacturer.

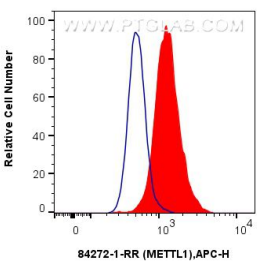
Selected Validation Data



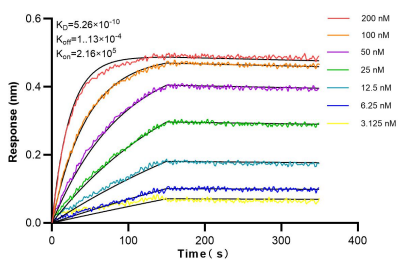
Various lysates were subjected to SDS PAGE followed by western blot with 84272-1-RR (METTL1 antibody) at dilution of 1:10000 incubated at room temperature for 1.5 hours.



Immunofluorescent analysis of (4% PFA) fixed A549 cells using METTL1 antibody (84272-1-RR, Clone: 241108G8) at dilution of 1:500 and CoraLite® 488-Conjugated Goat Anti-Rabbit IgG(H+L) (SA00013-2), CL594-Phalloidin (red).



1x10⁶ A431 cells were intracellularly stained with 0.25 ug METTL1 Recombinant antibody (84272-1-RR, Clone:241108G8) and APC-Conjugated Goat Anti-Rabbit IgG(H+L)(red), or 0.25 ug Isotype Control (blue). Cells were fixed and permeabilized with True-Nuclear Transcription Factor Buffer Set.



Biolayer interferometry (BLI) kinetic assays of 84272-1-RR against Human METTL1 were performed. The affinity constant is 0.526 nM.