

For Research Use Only

CDK1 Recombinant antibody, PBS Only

Catalog Number: 84271-1-PBS



Basic Information

Catalog Number:

84271-1-PBS

Concentration:

1 mg/ml

Source:

Rabbit

Isotype:

IgG

Immunogen Catalog Number:

AG29018

GenBank Accession Number:

BC014563

GeneID (NCBI):

983

UNIPROT ID:

P06493

Full Name:

cell division cycle 2, G1 to S and G2 to M

Calculated MW:

25 kDa

Observed MW:

34 kDa

Purification Method:

Protein A purification

CloneNo.:

240937C5

Applications

Tested Applications:

WB, IF/ICC, Indirect ELISA

Species Specificity:

human, mouse

Background Information

CDK1, also named as CDC2, belongs to the protein kinase superfamily, CMGC Ser/Thr protein kinase family and CDC2/CDKX subfamily. CDK1 plays a key role in the control of the eukaryotic cell cycle. It is required in higher cells for entry into S-phase and mitosis. CDK1 is a catalytic subunit of the highly conserved protein kinase complex known as M-phase promoting factor (MPF), which is essential for G1/S and G2/M phase transitions of eukaryotic cell cycle. It is a component of the kinase complex that phosphorylates the repetitive C-terminus of RNA polymerase II. Mitotic cyclins stably associate with CDK1 and function as regulatory subunits. CDK1 has 2 isoforms produced by alternative splicing with the molecular mass of 34 kDa and 27 kDa. This antibody may have cross reaction with CDK2.

Storage

Storage:

Store at -80°C.

The product is shipped with ice packs. Upon receipt, store it immediately at -80°C

Storage Buffer:

PBS Only

For technical support and original validation data for this product please contact:

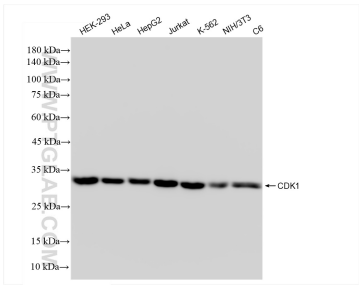
T: 4006900926

E: Proteintech-CN@ptglab.com

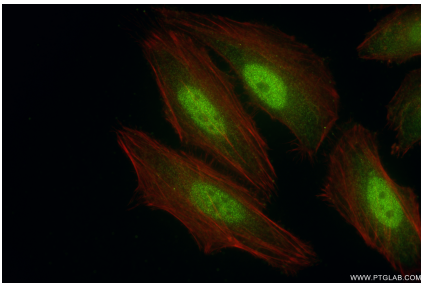
W: ptgcn.com

This product is exclusively available under Proteintech Group brand and is not available to purchase from any other manufacturer.

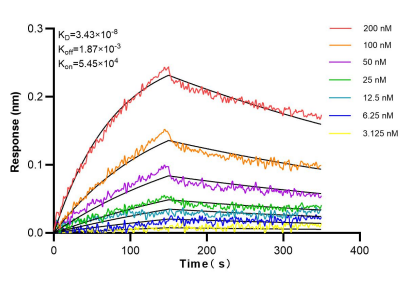
Selected Validation Data



Various lysates were subjected to SDS PAGE followed by western blot with 84271-1-RR (CDK1 antibody) at dilution of 1:10000 incubated at room temperature for 1.5 hours. This data was developed using the same antibody clone with 84271-1-PBS in a different storage buffer formulation.



Immunofluorescent analysis of (4% PFA) fixed HeLa cells using CDK1 antibody (84271-1-RR, Clone: 240937C5) at dilution of 1:500 and CoraLite®488-Conjugated Goat Anti-Rabbit IgG(H+L) (SA00013-2), CL594-Phalloidin (red). This data was developed using the same antibody clone with 84271-1-PBS in a different storage buffer formulation.



Biolayer interferometry (BLI) kinetic assays of 84271-1-RR against Human CDK1 were performed. The affinity constant is 34.3 nM.