

For Research Use Only

IL-1R2 Recombinant antibody, PBS Only (Capture/Detector)

Catalog Number: 84269-4-PBS



Basic Information

Catalog Number:

84269-4-PBS

Size:

1 mg/ml

Source:

Rabbit

Isotype:

IgG

GenBank Accession Number:

BC039031

GeneID (NCBI):

7850

UNIPROT ID:

P27930

Full Name:

interleukin 1 receptor, type II

Calculated MW:

398 aa, 45 kDa

Purification Method:

Protein A purification

CloneNo.:

241530A4

Applications

Tested Applications:

Cytometric bead array, Sandwich ELISA, Indirect ELISA,
Sample test

Species Specificity:

human

Background Information

Storage

Storage:

Store at -80°C.

The product is shipped with ice packs. Upon receipt, store it immediately at -80°C

Storage Buffer:

PBS Only

For technical support and original validation data for this product please contact:

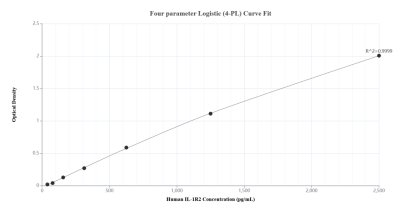
T: 4006900926

E: Proteintech-CN@ptglab.com

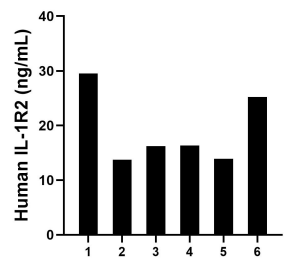
W: ptgcn.com

This product is exclusively available under Proteintech Group brand and is not available to purchase from any other manufacturer.

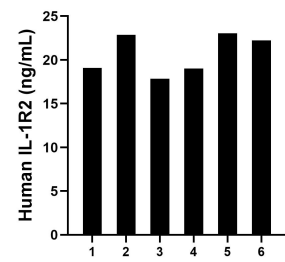
Selected Validation Data



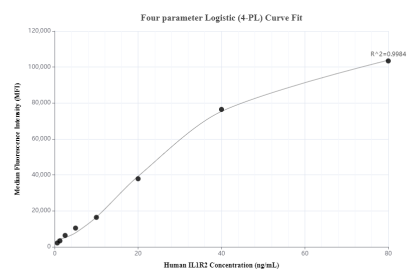
Sandwich ELISA standard curve of MP01178-4, Human IL-1R2 Recombinant Matched Antibody Pair - PBS only. 84269-1-PBS was coated to a plate as the capture antibody and incubated with serial dilutions of standard Eg0118. 84269-4-PBS was HRP conjugated as the detection antibody. Range: 39.1-2500 pg/mL.



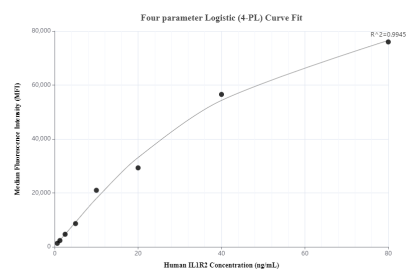
Plasma of six individual healthy human donors was measured. The IL-1R2 concentration of detected samples was determined to be 19.2 ng/mL with a range of 13.8-29.5 ng/mL.



Serum of six individual healthy human donors was measured. The IL-1R2 concentration of detected samples was determined to be 20.7 ng/mL with a range of 17.9-23.0 ng/mL.



Cytometric bead array standard curve of MP01178-1, IL-1R2 Recombinant Matched Antibody Pair, PBS Only. Capture antibody: 84269-4-PBS. Detection antibody: 84269-2-PBS. Standard: Eg0118. Range: 0.625-80 ng/mL.



Cytometric bead array standard curve of MP01178-2, IL-1R2 Recombinant Matched Antibody Pair, PBS Only. Capture antibody: 84269-4-PBS. Detection antibody: 84269-1-PBS. Standard: Eg0118. Range: 0.625-80 ng/mL.