

# CD22 Recombinant antibody

Catalog Number: 84265-5-RR

## Basic Information

## Catalog Number:

84265-5-RR

## Size:

1000 µg/ml

## Source:

Rabbit

## Isotype:

IgG

## GenBank Accession Number:

BC109306

## GeneID (NCBI):

933

## UNIPROT ID:

P20273

## Full Name:

CD22 molecule

## Calculated MW:

847 aa, 95 kDa

## Observed MW:

140 kDa

## Purification Method:

Protein A purification

## CloneNo.:

241314B5

## Recommended Dilutions:

WB 1:5000-1:50000

IHC 1:500-1:2000

## Applications

## Tested Applications:

WB, IHC, ELISA

## Species Specificity:

human

## Positive Controls:

WB : Ramos cells, Daudi cells, Raji cells

IHC : human tonsillitis tissue,

**Note-IHC: suggested antigen retrieval with TE buffer pH 9.0; (\*) Alternatively, antigen retrieval may be performed with citrate buffer pH 6.0**

## Background Information

CD22, also known as Siglec-2 (sialic acid binding Ig-like lectin 2) or BL-CAM (B-lymphocyte cell adhesion molecule), is a 130-140 kDa, B-cell restricted, type I transmembrane glycoprotein belonging to the immunoglobulin gene superfamily. The expression of CD22 is developmentally regulated. It is expressed at low levels in the cytoplasm of pro-B and pre-B cells and present on the cell surface only at mature stages of B-cell differentiation. Cell surface expression is lost during terminal differentiation into plasma cell and after B-cell activation. CD22 is an inhibitory receptor for B-cell receptor (BCR) signalling, preferentially binds to alpha-2,6-linked sialic acid and mediates B-cell B-cell interactions. It plays a crucial role in activation and differentiation of the B-cell.

## Storage

## Storage:

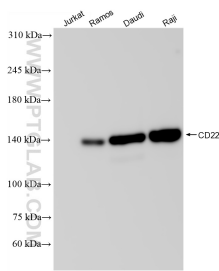
Store at -20°C. Stable for one year after shipment.

## Storage Buffer:

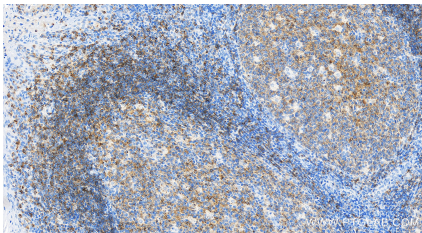
PBS with 0.02% sodium azide and 50% glycerol pH 7.3.

Aliquoting is unnecessary for -20°C storage

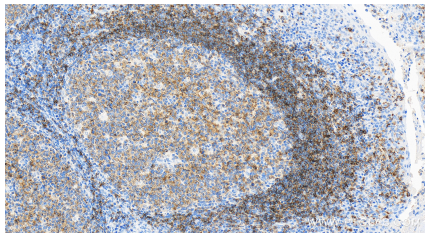
Selected Validation Data



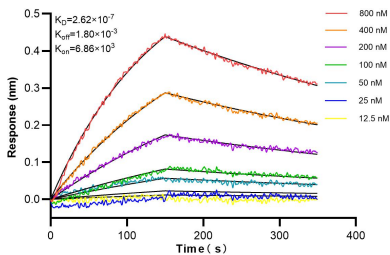
Various lysates were subjected to SDS PAGE followed by western blot with 84265-5-RR (CD22 antibody) at dilution of 1:10000 incubated at room temperature for 1.5 hours.



Immunohistochemical analysis of paraffin-embedded human tonsillitis tissue slide using 84265-5-RR (CD22 antibody) at dilution of 1:1000 (under 40x lens). Heat mediated antigen retrieval with Tris-EDTA buffer (pH 9.0).



Immunohistochemical analysis of paraffin-embedded human tonsillitis tissue slide using 84265-5-RR (CD22 antibody) at dilution of 1:1000 (under 40x lens). Heat mediated antigen retrieval with Tris-EDTA buffer (pH 9.0).



Biolayer interferometry (BLI) kinetic assays of 84265-5-RR against Human CD22 were performed. The affinity constant is 262 nM.