

For Research Use Only

CD22 Recombinant antibody, PBS Only (Capture)

Catalog Number: 84265-4-PBS



Basic Information

Catalog Number:

84265-4-PBS

Size:

1 mg/ml

Source:

Rabbit

Isotype:

IgG

GenBank Accession Number:

BC109306

GeneID (NCBI):

933

UNIPROT ID:

P20273

Full Name:

CD22 molecule

Calculated MW:

847 aa, 95 kDa

Purification Method:

Protein A purification

CloneNo.:

241314E9

Applications

Tested Applications:

Cytometric bead array, Sandwich ELISA, Indirect ELISA,
Sample test

Species Specificity:

human

Background Information

Storage

Storage:

Store at -80°C.

The product is shipped with ice packs. Upon receipt, store it immediately at -80°C

Storage Buffer:

PBS Only

For technical support and original validation data for this product please contact:

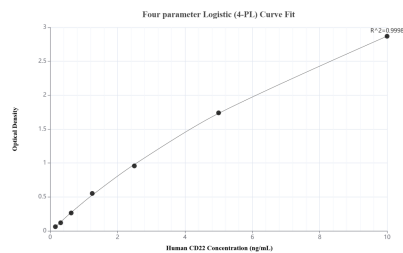
T: 4006900926

E: Proteintech-CN@ptglab.com

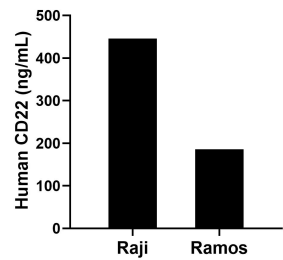
W: ptgcn.com

This product is exclusively available under Proteintech Group brand and is not available to purchase from any other manufacturer.

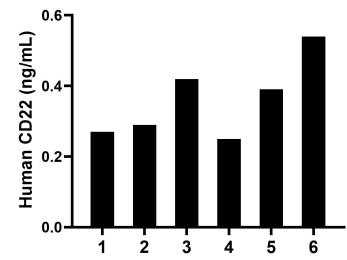
Selected Validation Data



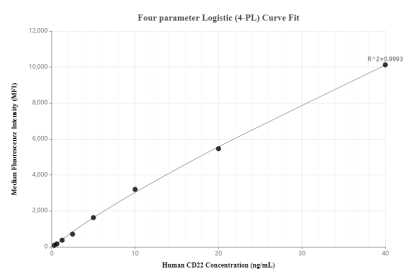
Sandwich ELISA standard curve of MP01173-3, Human CD22 Recombinant Matched Antibody Pair - PBS only. 84265-4-PBS was coated to a plate as the capture antibody and incubated with serial dilutions of standard RP02324. 84265-2-PBS was HRP conjugated as the detection antibody. Range: 0.156-10 ng/mL



The mean CD22 concentration was determined to be 445.39 ng/mL in Raji cell extract based on a 3.00 mg/mL extract load and 185.59 ng/mL in Ramos cell extract based on a 1.40 mg/mL extract load.



Serum of six individual healthy human donors was measured. The CD22 concentration of detected samples was determined to be 0.36 ng/mL with a range of 0.25-0.54 ng/mL



Cytometric bead array standard curve of MP01173-3, CD22 Recombinant Matched Antibody Pair, PBS Only. Capture antibody: 84265-4-PBS. Detection antibody: 84265-2-PBS. Standard: RP02324. Range: 0.313-40 ng/mL