

For Research Use Only

GBP2 Recombinant antibody, PBS Only (Capture/Detector)

Catalog Number: 84264-3-PBS



Basic Information

Catalog Number:

84264-3-PBS

Size:

1 mg/ml

Source:

Rabbit

Isotype:

IgG

Immunogen Catalog Number:

AG2425

GenBank Accession Number:

BC022272

GeneID (NCBI):

2634

UNIPROT ID:

P32456

Full Name:

guanylate binding protein 2,
interferon-inducible

Calculated MW:

591 aa, 67 kDa

Purification Method:

Protein A purification

CloneNo.:

241580D5

Applications

Tested Applications:

Cytometric bead array, Sandwich ELISA, Indirect ELISA,
Sample test

Species Specificity:

human

Background Information

Storage

Storage:

Store at -80°C.

The product is shipped with ice packs. Upon receipt, store it immediately at -80°C

Storage Buffer:

PBS Only

For technical support and original validation data for this product please contact:

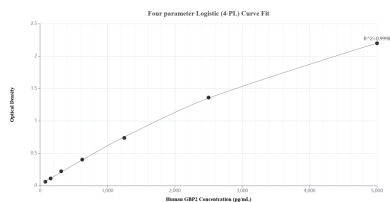
T: 4006900926

E: Proteintech-CN@ptglab.com

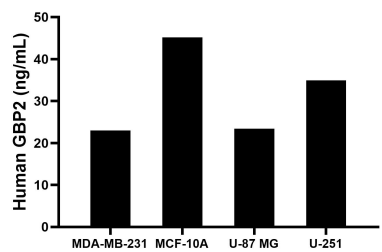
W: ptgcn.com

This product is exclusively available under Proteintech Group brand and is not available to purchase from any other manufacturer.

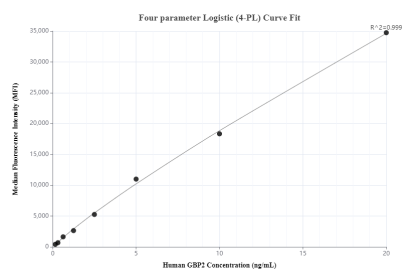
Selected Validation Data



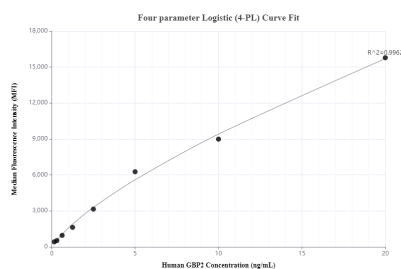
Sandwich ELISA standard curve of MP01177-4, Human GBP2 Recombinant Matched Antibody Pair - PBS only. 84264-3-PBS was coated to a plate as the capture antibody and incubated with serial dilutions of standard Ag2425. 84264-7-PBS was HRP conjugated as the detection antibody. Range: 78.1-5000 pg/mL.



The mean GBP2 concentration was determined to be 23.0 ng/mL in MDA-MB-231 cell extract based on a 1.9 mg/mL extract load, 45.1 ng/mL in MCF-10A cell extract based on a 1.3 mg/mL extract load, 23.4 ng/mL in U-87 MG cell extract based on a 2.0 mg/mL extract load and 34.9 ng/mL in U-251 cell extract based on a 1.2 mg/mL extract load.



Cytometric bead array standard curve of MP01177-2, GBP2 Recombinant Matched Antibody Pair, PBS Only. Capture antibody: 84264-4-PBS. Detection antibody: 84264-3-PBS. Standard: Ag2425. Range: 0.156-20 ng/mL.



Cytometric bead array standard curve of MP01177-3, GBP2 Recombinant Matched Antibody Pair, PBS Only. Capture antibody: 84264-1-PBS. Detection antibody: 84264-3-PBS. Standard: Ag2425. Range: 0.156-20 ng/mL.