

For Research Use Only

PKC Delta Recombinant monoclonal antibody

Catalog Number: 84261-5-RR



Basic Information

Catalog Number:

84261-5-RR

Source:

Rabbit

Isotype:

IgG

Immunogen Catalog Number:

AG5473

GenBank Accession Number:

BC043350

GeneID (NCBI):

5580

UNIPROT ID:

Q05655

Full Name:

protein kinase C, delta

Calculated MW:

78 kDa

Observed MW:

70-80 kDa

Purification Method:

Protein A purification

CloneNo.:

241608A2

Recommended Dilutions:

WB: 1:1000-1:4000

IF/ICC: 1:250-1:1000

FC (Intra): 0.25 ug per 10⁶ cells in a 100 µl suspension

Applications

Tested Applications:

WB, IF/ICC, FC (Intra), ELISA

Species Specificity:

human, mouse, rat

Positive Controls:

WB : NIH/3T3 cells, mouse brain tissue, rat brain tissue

IF/ICC : HeLa cells,

FC (Intra) : HT-1080 cells, Hela cells

Background Information

PKC Delta is a member of the protein kinase C family of serine- and threonine-specific protein kinases. The encoded protein is activated by diacylglycerol and is both a tumor suppressor and a positive regulator of cell cycle progression. Also, this protein can positively or negatively regulate apoptosis. Defects in this gene are a cause of autoimmune lymphoproliferative syndrome.

Storage

Storage:

Store at -20°C. Stable for one year after shipment.

Storage Buffer:

PBS with 0.02% sodium azide and 50% glycerol, pH7.3

Aliquoting is unnecessary for -20°C storage

For technical support and original validation data for this product please contact:

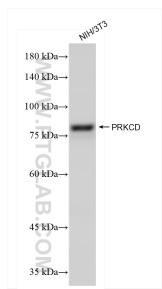
T: 4006900926

E: Proteintech-CN@ptglab.com

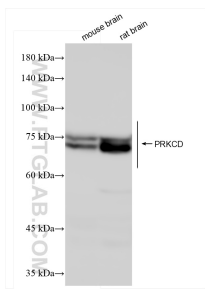
W: ptgcn.com

This product is exclusively available under Proteintech Group brand and is not available to purchase from any other manufacturer.

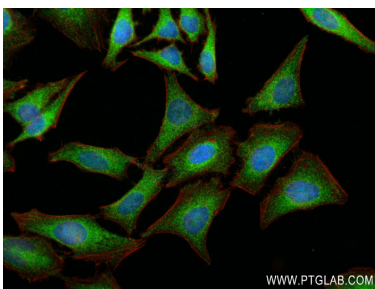
Selected Validation Data



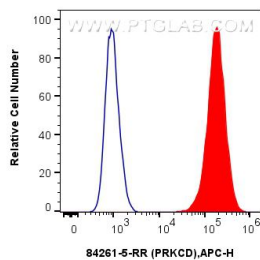
NIH/3T3 cells were subjected to SDS PAGE followed by western blot with 84261-5-RR (PKC Delta antibody) at dilution of 1:2000 incubated at room temperature for 1.5 hours.



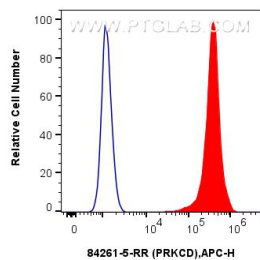
Various lysates were subjected to SDS PAGE followed by western blot with 84261-5-RR (PKC Delta antibody) at dilution of 1:2000 incubated at room temperature for 1.5 hours.



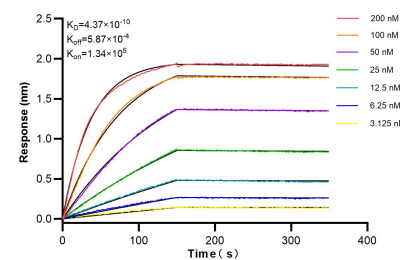
Immunofluorescent analysis of (4% PFA) fixed HeLa cells using PRKCD antibody (84261-5-RR, Clone: 241608A2) at dilution of 1:500 and Coralite®488-Conjugated Goat Anti-Rabbit IgG(H+L) (SA00013-2), CL594-Phalloidin (red).



1x10⁶ HT-1080 cells were intracellularly stained with 0.25 ug PRKCD Recombinant Antibody (84261-5-RR, Clone:241608A2) and APC-Conjugated Goat Anti-Rabbit IgG(H+L)(red), or 0.25 ug Rabbit IgG Isotype Control Recombinant Antibody (98136-1-RR, Clone: 240953C9) (blue). Cells were fixed with 4% PFA and permeabilized with Flow Cytometry Perm Buffer.



1x10⁶ HeLa cells were intracellularly stained with 0.25 ug PRKCD Recombinant Antibody (84261-5-RR, Clone:241608A2) and APC-Conjugated Goat Anti-Rabbit IgG(H+L)(red), or 0.25 ug Rabbit IgG Isotype Control Recombinant Antibody (98136-1-RR, Clone: 240953C9) (blue). Cells were fixed with 4% PFA and permeabilized with Flow Cytometry Perm Buffer.



Bilayer interferometry (BLI) kinetic assays of 84261-5-RR against Human PKC Delta were performed. The affinity constant is 0.437 nM.