

For Research Use Only

IFN-gamma Recombinant antibody, PBS Only (Detector)

Catalog Number: 84246-2-PBS



Basic Information

Catalog Number:

84246-2-PBS

Size:

1 mg/ml

Source:

Rabbit

Isotype:

IgG

GenBank Accession Number:

BC070256

GeneID (NCBI):

3458

ENSEMBL Gene ID:

ENSG00000111537

UNIPROT ID:

P01579

Full Name:

IFN gamma

Calculated MW:

166 aa, 19 kDa

Purification Method:

Protein A purification

CloneNo.:

241390B1

Applications

Tested Applications:

Cytometric bead array, Sandwich ELISA, Indirect ELISA, Sample test

Species Specificity:

human

Background Information

Storage

Storage:

Store at -80°C.

The product is shipped with ice packs. Upon receipt, store it immediately at -80°C

Storage Buffer:

PBS Only

For technical support and original validation data for this product please contact:

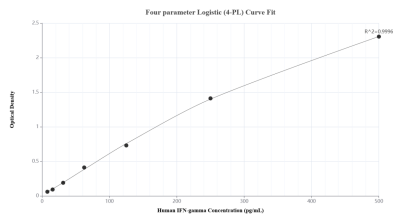
T: 4006900926

E: Proteintech-CN@ptglab.com

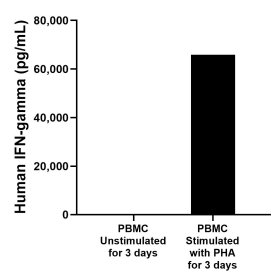
W: ptgcn.com

This product is exclusively available under Proteintech Group brand and is not available to purchase from any other manufacturer.

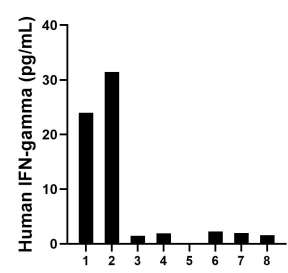
Selected Validation Data



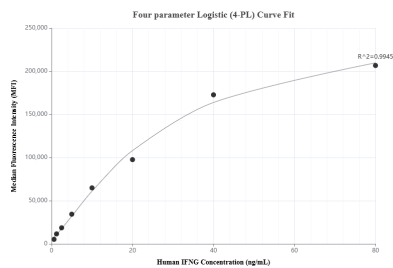
Sandwich ELISA standard curve of MP01131-1, Human IFN-gamma Recombinant Matched Antibody Pair - PBS only. 84246-3-PBS was coated to a plate as the capture antibody and incubated with serial dilutions of standard Eg0004. 84246-2-PBS was HRP conjugated as the detection antibody. Range: 7.80-500 pg/mL.



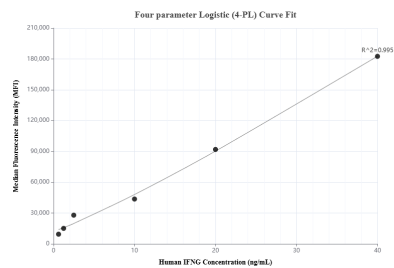
Human peripheral blood mononuclear cells (PBMC) were cultured unstimulated or stimulated with 10 μ g/mL PHA for 3 days. For the PBMC supernatant cultured for 3 days, the mean IFN-gamma concentration was determined to be 6.1 pg/mL in unstimulated PBMC supernatant, 65860.8 pg/mL in PHA stimulated PBMC supernatant.



Serum of eight individual healthy human donors was measured. Six measured less than the lowest human IFN-gamma standard, 7.8 pg/mL. Two samples read 24.0 pg/mL and 31.4 pg/mL.



Cytometric bead array standard curve of MP01131-1, IFNG/IFN-gamma Recombinant Matched Antibody Pair, PBS Only. Capture antibody: 84246-3-PBS. Detection antibody: 84246-2-PBS. Standard: Eg0004. Range: 0.625-80 ng/mL.



Cytometric bead array standard curve of MP01131-2, IFNG/IFN-gamma Recombinant Matched Antibody Pair, PBS Only. Capture antibody: 84246-1-PBS. Detection antibody: 84246-2-PBS. Standard: Eg0004. Range: 0.625-40 ng/mL.