

For Research Use Only

CD84 Recombinant antibody, PBS Only (Detector)

Catalog Number: 84245-2-PBS



Basic Information

Catalog Number:

84245-2-PBS

Size:

1 mg/ml

Source:

Rabbit

Isotype:

IgG

GenBank Accession Number:

BC020063

GeneID (NCBI):

8832

UNIPROT ID:

Q9UIB8

Full Name:

CD84 molecule

Calculated MW:

345 aa, 39 kDa

Observed MW:

70 kDa

Purification Method:

Protein A purification

CloneNo.:

241342F3

Applications

Tested Applications:

WB, IF/ICC, Cytometric bead array, Indirect ELISA

Species Specificity:

human

Background Information

CD84, also known as SLAMF5, is a member of the CD2 subfamily of the immunoglobulin receptor superfamily (PMID: 9310491). CD84 is a single-chain type-I glycoprotein composed of two extracellular Ig-like domains, a hydrophobic transmembrane region, and a cytoplasmic domain. It is broadly expressed on almost all leukocyte subsets. CD84 functions as a homophilic adhesion molecule, whose signaling can activate or inhibit leukocyte function depending on the cell type and its stage of activation or differentiation (PMID: 30522694).

Storage

Storage:

Store at -80°C.

The product is shipped with ice packs. Upon receipt, store it immediately at -80°C

Storage Buffer:

PBS Only

For technical support and original validation data for this product please contact:

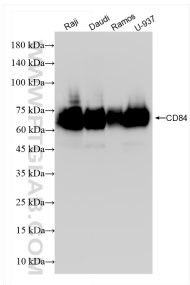
T: 4006900926

E: Proteintech-CN@ptglab.com

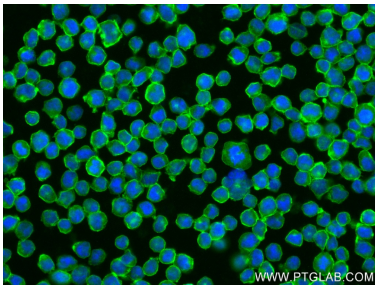
W: ptgcn.com

This product is exclusively available under Proteintech Group brand and is not available to purchase from any other manufacturer.

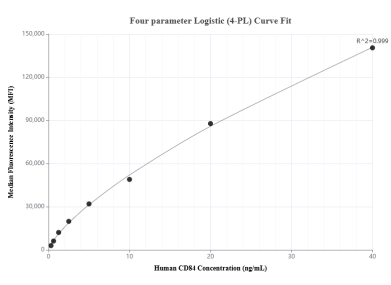
Selected Validation Data



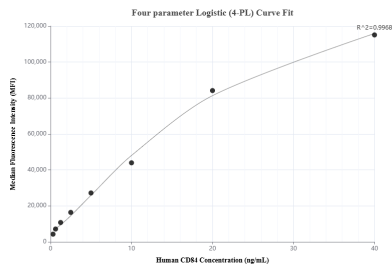
Various lysates were subjected to SDS PAGE followed by western blot with 84245-2-RR (CD84 antibody) at dilution of 1:4000 incubated at room temperature for 1.5 hours. This data was developed using the same antibody clone with 84245-2-PBS in a different storage buffer formulation.



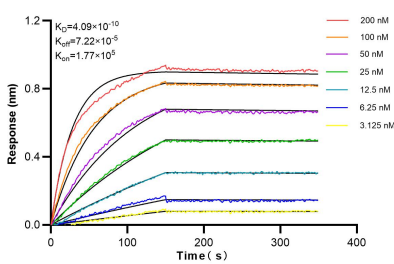
Immunofluorescent analysis of (4% PFA) fixed Raji cells using CD84 antibody (84245-2-RR, Clone: 241342F3) at dilution of 1:400 and CoraLite®488-Conjugated Goat Anti-Rabbit IgG(H+L) (SA00013-2). This data was developed using the same antibody clone with 84245-2-PBS in a different storage buffer formulation.



Cytometric bead array standard curve of MP01112-1, CD84 Recombinant Matched Antibody Pair, PBS Only. Capture antibody: 98108-1-PBS. Detection antibody: 84245-2-PBS. Standard: RP02347. Range: 0.313-40 ng/mL



Cytometric bead array standard curve of MP01112-3, CD84 Recombinant Matched Antibody Pair, PBS Only. Capture antibody: 84245-3-PBS. Detection antibody: 84245-2-PBS. Standard: RP02347. Range: 0.313-40 ng/mL



Biolayer interferometry (BLI) kinetic assays of 84245-2-RR against Human CD84 were performed. The affinity constant is 0.409 nM.