

For Research Use Only

CD8B Recombinant antibody, PBS Only (Detector)

Catalog Number: 84240-1-PBS



Basic Information

Catalog Number:

84240-1-PBS

Size:

1 mg/ml

Source:

Rabbit

Isotype:

IgG

GenBank Accession Number:

BC100913

GeneID (NCBI):

926

UNIPROT ID:

P10966

Full Name:

CD8b molecule

Calculated MW:

243 aa, 27 kDa

Purification Method:

Protein A purification

CloneNo.:

241326C9

Applications

Tested Applications:

Cytometric bead array, Sandwich ELISA, Indirect ELISA, Sample test

Species Specificity:

human

Background Information

Storage

Storage:

Store at -80°C.

The product is shipped with ice packs. Upon receipt, store it immediately at -80°C

Storage Buffer:

PBS Only

For technical support and original validation data for this product please contact:

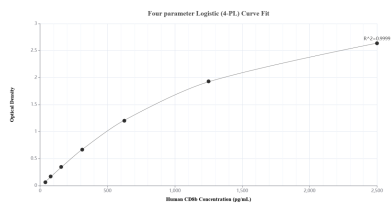
T: 4006900926

E: Proteintech-CN@ptglab.com

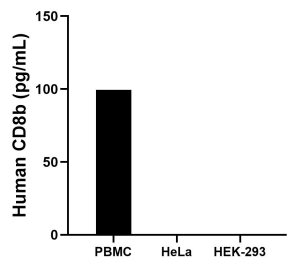
W: ptgcn.com

This product is exclusively available under Proteintech Group brand and is not available to purchase from any other manufacturer.

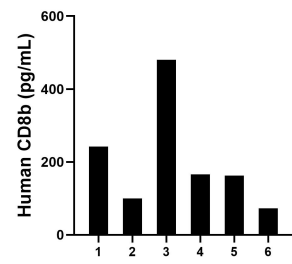
Selected Validation Data



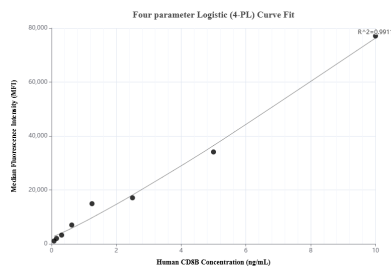
Sandwich ELISA standard curve of MP01133-1, Human CD8b Recombinant Matched Antibody Pair - PBS only. 84240-3-PBS was coated to a plate as the capture antibody and incubated with serial dilutions of standard RP02351. 84240-1-PBS was HRP conjugated as the detection antibody. Range: 39.1-2500 pg/mL.



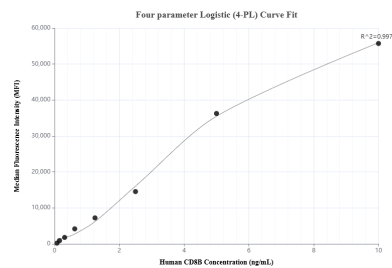
Human peripheral blood mononuclear cells (PBMCs), with HeLa and HEK-293 as negative controls, were cultured for 5 days. The mean concentration of CD8b was measured 99.4 pg/mL in the PBMC supernatant, undetectable in HeLa and HEK-293 supernatants.



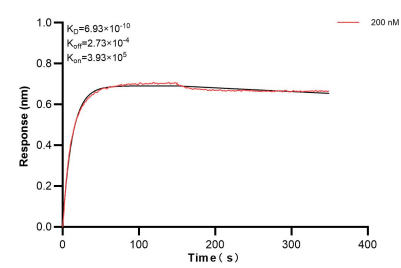
Serum of six individual healthy human donors was measured. The CD8b concentration of detected samples was determined to be 204 pg/mL with a range of 73-480 pg/mL.



Cytometric bead array standard curve of MP01133-1, CD8B Recombinant Matched Antibody Pair, PBS Only. Capture antibody: 84240-3-PBS. Detection antibody: 84240-1-PBS. Standard: RP02351. Range: 0.078-10 ng/mL.



Cytometric bead array standard curve of MP01133-2, CD8B Recombinant Matched Antibody Pair, PBS Only. Capture antibody: 84240-2-PBS. Detection antibody: 84240-1-PBS. Standard: RP02351. Range: 0.078-10 ng/mL.



Bilayer interferometry (BLI) kinetic assay of 84240-1-PBS against Human CD8B was performed. The affinity constant is 0.693 nM.