

For Research Use Only

# APOBEC3A Recombinant antibody, PBS Only (Capture)

Catalog Number: 84239-2-PBS



## Basic Information

Catalog Number:

84239-2-PBS

Size:

1 mg/ml

Source:

Rabbit

Isotype:

IgG

Immunogen Catalog Number:

AG18845

GenBank Accession Number:

BC126416

GeneID (NCBI):

200315

UNIPROT ID:

P31941

Full Name:

apolipoprotein B mRNA editing enzyme, catalytic polypeptide-like 3A

Calculated MW:

199 aa, 23 kDa

Purification Method:

Protein A purification

CloneNo.:

241529F1

## Applications

Tested Applications:

IF/ICC, Cytometric bead array, Indirect ELISA

Species Specificity:

human

## Background Information

APOBEC3A, also known as A3A, belongs to the cytidine and deoxycytidylate deaminase family. APOBEC3A plays a role in immunity, by restricting transmission of foreign DNA such as viruses. One mechanism of foreign DNA restriction is deamination of foreign double-stranded DNA cytidines to uridines, which leads to DNA degradation. However, other mechanisms are also thought to be involved, as anti-viral effect is not dependent on deaminase activity. APOBEC3A is expressed in several cell types, including keratinocytes and myeloid cells (PMID: 28825669). APOBEC3A has 2 isoforms with the molecular mass of 22 and 23 kDa.

## Storage

Storage:

Store at -80°C.

The product is shipped with ice packs. Upon receipt, store it immediately at -80°C

Storage Buffer:

PBS Only

For technical support and original validation data for this product please contact:

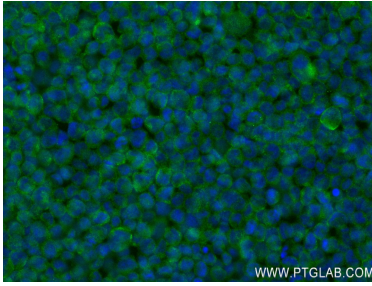
T: 4006900926

E: [Proteintech-CN@ptglab.com](mailto:Proteintech-CN@ptglab.com)

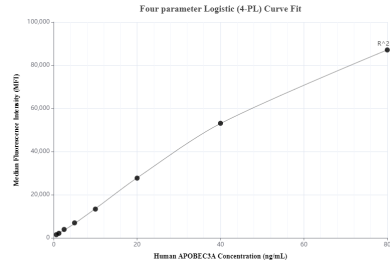
W: [ptgcn.com](http://ptgcn.com)

This product is exclusively available under Proteintech Group brand and is not available to purchase from any other manufacturer.

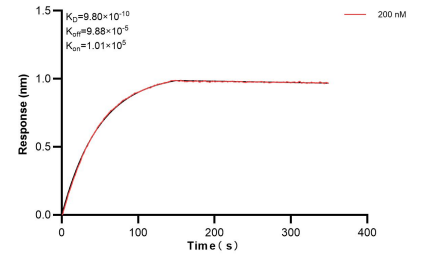
## Selected Validation Data



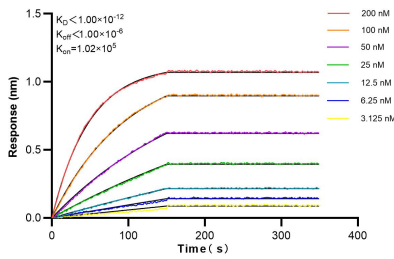
Immunofluorescent analysis of (4% PFA) fixed THP-1 cells using APOBEC3A antibody (84239-2-RR, Clone: 241529F1) at dilution of 1:250 and CoraLite@488-Conjugated Goat Anti-Rabbit IgG(H+L) (SA00013-2). This data was developed using the same antibody clone with 84239-2-PBS in a different storage buffer formulation.



Cytometric bead array standard curve of MP01122-3, APOBEC3A Recombinant Matched Antibody Pair, PBS Only. Capture antibody: 84239-2-PBS. Detection antibody: 84239-3-PBS. Standard: Ag18845. Range: 0.625-80 ng/mL.



Bi-layer interferometry (BLI) kinetic assay of 84239-2-PBS against Human APOBEC3A was performed. The affinity constant is 0.98 nM.



Bi-layer interferometry (BLI) kinetic assays of 84239-2-RR against Human APOBEC3A were performed. The affinity constant is below 1 pM.