

For Research Use Only

# CD39/ENTPD1 Recombinant antibody, PBS Only (Detector)

Catalog Number: 84235-2-PBS



## Basic Information

Catalog Number:

84235-2-PBS

Size:

1 mg/ml

Source:

Rabbit

Isotype:

IgG

GenBank Accession Number:

BC047664

GeneID (NCBI):

953

UNIPROT ID:

P49961

Full Name:

ectonucleoside triphosphate  
diphosphohydrolase 1

Calculated MW:

58 kDa

Purification Method:

Protein A purification

CloneNo.:

241293D3

## Applications

Tested Applications:

Cytometric bead array, Sandwich ELISA, Indirect ELISA,  
Sample test

Species Specificity:

human

## Background Information

### Storage

Storage:

Store at -80°C.

**The product is shipped with ice packs. Upon receipt, store it immediately at -80°C**

Storage Buffer:

PBS Only

For technical support and original validation data for this product please contact:

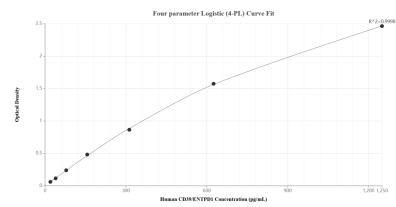
T: 4006900926

E: Proteintech-CN@ptglab.com

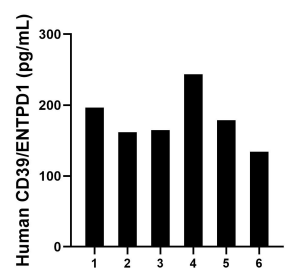
W: ptgcn.com

**This product is exclusively available under Proteintech Group brand and is not available to purchase from any other manufacturer.**

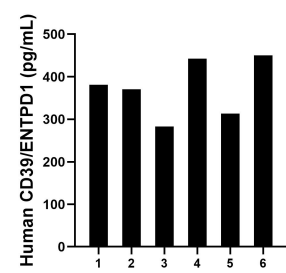
Selected Validation Data



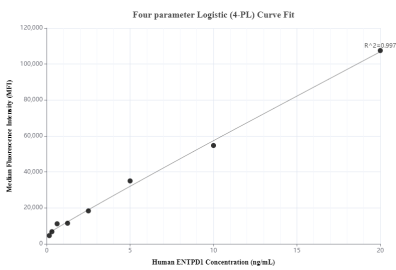
Sandwich ELISA standard curve of MP01143-1, Human CD39/ENTPD1 Recombinant Matched Antibody Pair - PBS only. 98102-1-PBS was coated to a plate as the capture antibody and incubated with serial dilutions of standard RP02313. 84235-2-PBS was HRP conjugated as the detection antibody. Range: 19.5-1250 pg/mL



Plasma of six individual healthy human donors was measured. The CD39/ENTPD1 concentration of detected samples was determined to be 179.9 pg/mL with a range of 134.2-243.6 ng/mL.



Serum of six individual healthy human donors was measured. The CD39/ENTPD1 concentration of detected samples was determined to be 373.5 pg/mL with a range of 283.0-450.4 pg/mL.



Cytometric bead array standard curve of MP01143-1, ENTPD1/CD39 Recombinant Matched Antibody Pair, PBS Only. Capture antibody: 98102-1-PBS. Detection antibody: 84235-2-PBS. Standard: RP02313. Range: 0.156-20 ng/mL