

For Research Use Only

# ELL2 Recombinant antibody, PBS Only (Capture/Detector)

Catalog Number: 84226-1-PBS



## Basic Information

Catalog Number:

84226-1-PBS

Concentration:

1 mg/ml

Source:

Rabbit

Isotype:

IgG

Immunogen Catalog Number:

AG3428

GenBank Accession Number:

BC028412

GeneID (NCBI):

22936

UNIPROT ID:

O00472

Full Name:

elongation factor, RNA polymerase II,

2

Calculated MW:

640 aa, 72 kDa

Purification Method:

Protein A purification

CloneNo.:

241491C7

## Applications

Tested Applications:

Cytometric bead array, Sandwich ELISA, Indirect ELISA,  
Sample test

Species Specificity:

human

## Background Information

### Storage

Storage:

Store at -80°C.

The product is shipped with ice packs. Upon receipt, store it immediately at -80°C

Storage Buffer:

PBS Only

For technical support and original validation data for this product please contact:

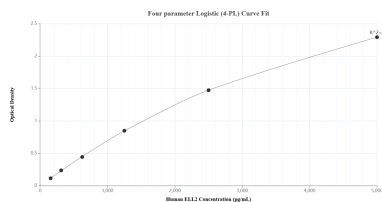
T: 4006900926

E: [Proteintech-CN@ptglab.com](mailto:Proteintech-CN@ptglab.com)

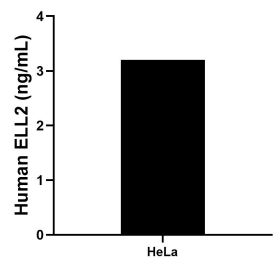
W: [ptgcn.com](http://ptgcn.com)

This product is exclusively available under Proteintech Group brand and is not available to purchase from any other manufacturer.

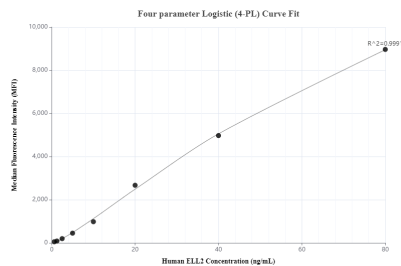
## Selected Validation Data



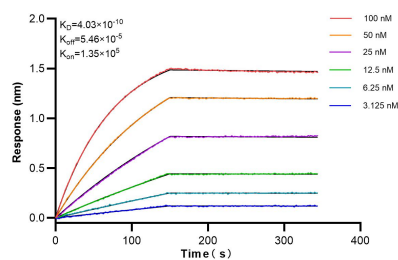
Sandwich ELISA standard curve of MP01114-2, Human ELL2 Recombinant Matched Antibody Pair - PBS only. 84226-3-PBS was coated to a plate as the capture antibody and incubated with serial dilutions of standard Ag3428. 84226-1-PBS was HRP conjugated as the detection antibody. Range: 156-5000 pg/mL.



The mean ELL2 concentration was determined to be 3.2 ng/mL in HeLa cell extract based on a 2.8 mg/mL extract load.



Cytometric bead array standard curve of MP01114-1, ELL2 Recombinant Matched Antibody Pair, PBS Only. Capture antibody: 84226-1-PBS. Detection antibody: 84226-2-PBS. Standard: Ag3428. Range: 0.625-80 ng/mL.



Bi-layer interferometry (BLI) kinetic assays of 84226-1-RR against Human ELL2 were performed. The affinity constant is 0.403 nM.