

For Research Use Only

NETO2 Recombinant antibody

Catalog Number: 84222-2-RR

Featured Product

1 Publications



Basic Information

Catalog Number:

84222-2-RR

Concentration:

1000 µg/ml

Source:

Rabbit

Isotype:

IgG

Immunogen Catalog Number:

AG2971

GenBank Accession Number:

BC012381

GeneID (NCBI):

81831

UNIPROT ID:

Q8NC67

Full Name:

neuropilin (NRP) and tolloid (TLL)-like

2

Calculated MW:

525 aa, 59 kDa

Observed MW:

59 kDa

Purification Method:

Protein A purification

CloneNo.:

241451E10

Recommended Dilutions:

WB: 1:2000-1:10000

Applications

Tested Applications:

WB, ELISA

Cited Applications:

WB

Species Specificity:

human, mouse, rat

Cited Species:

human

Positive Controls:

WB: rat brain tissue, HEK-293 cells, mouse brain tissue

Background Information

Neuropilin and tolloid-like 2 (NETO2), a member of the subfamily of CUB domain and LDLa-containing proteins, was identified as an auxiliary protein of neuronal kainate receptors (KARs) and played critical roles in regulating the functions of KARs. It was also able to bind to the active oligomeric form of K⁺-Cl⁻ cotransporter (KCC2) to enhance its recycling in hippocampal neurons. Recently, elevated mRNA levels of NETO2 were detected in several types of tumors.

Notable Publications

Author	Pubmed ID	Journal	Application
Na Shun Meng He	40158169	World J Surg Oncol	WB

Storage

Storage:

Store at -20°C. Stable for one year after shipment.

Storage Buffer:

PBS with 0.02% sodium azide and 50% glycerol, pH7.3

Aliquoting is unnecessary for -20°C storage

For technical support and original validation data for this product please contact:

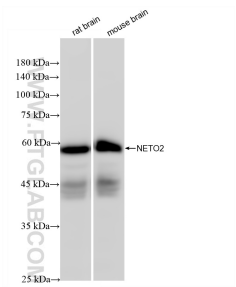
T: 4006900926

E: Proteintech-CN@ptglab.com

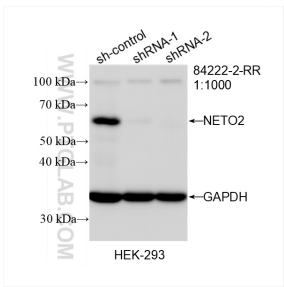
W: ptgcn.com

This product is exclusively available under Proteintech Group brand and is not available to purchase from any other manufacturer.

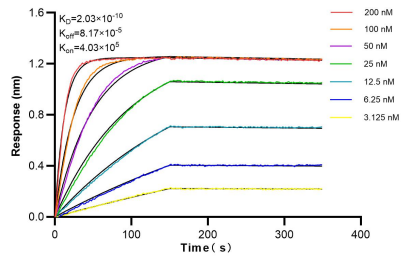
Selected Validation Data



Various lysates were subjected to SDS PAGE followed by western blot with 84222-2-RR (NETO2 antibody) at dilution of 1:5000 incubated at room temperature for 1.5 hours.



WB result of NETO2 antibody (84222-2-RR; 1:1000; incubated at room temperature for 1.5 hours) with sh-Control and sh-NETO2 transfected HEK-293 cells.



Biolayer interferometry (BLI) kinetic assays of 84222-2-RR against Human NETO2 were performed. The affinity constant is 0.203 nM.