

For Research Use Only

CPN1 Recombinant antibody, PBS Only (Detector)

Catalog Number: 84218-1-PBS



Basic Information

| | | | | | |
|---------------------------|-------------|---------------------------|-----------------------------------|----------------------|------------------------|
| Catalog Number: | 84218-1-PBS | GenBank Accession Number: | BC027897 | Purification Method: | Protein A purification |
| Size: | 1 mg/ml | GeneID (NCBI): | 1369 | CloneNo.: | 241481A5 |
| Source: | Rabbit | UNIPROT ID: | P15169 | | |
| Isotype: | IgG | Full Name: | carboxypeptidase N, polypeptide 1 | | |
| Immunogen Catalog Number: | AG4035 | Calculated MW: | 458 aa, 52 kDa | | |
| | | Observed MW: | 40-50 kDa | | |

Applications

Tested Applications:
WB, IHC, IF-P, Cytometric bead array, Indirect ELISA

Species Specificity:
human, mouse, rat

Background Information

Human carboxypeptidase N (CPN), a member of the CPN/E subfamily of "regulatory" metallo-carboxypeptidases, is an extracellular glycoprotein synthesized in the liver and secreted into the blood, where it controls the activity of vasoactive peptide hormones, growth factors and cytokines by specifically removing C-terminal basic residues. Normally, CPN circulates in blood plasma as a hetero-tetramer consisting of two 83 kDa (CPN2) domains each flanked by a 48 to 55 kDa catalytic (CPN1) domain. The C terminal region of the CPN1 subunit differs from all other family members in that it contains numerous basic residues. Proteolysis at these sites apparently happens either constitutively in the blood or during processing and secretion from the liver.

Storage

Storage:
Store at -80°C.
The product is shipped with ice packs. Upon receipt, store it immediately at -80°C

Storage Buffer:
PBS Only

For technical support and original validation data for this product please contact:

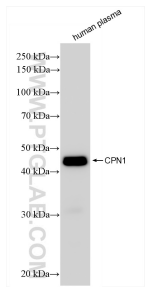
T: 4006900926

E: Proteintech-CN@ptglab.com

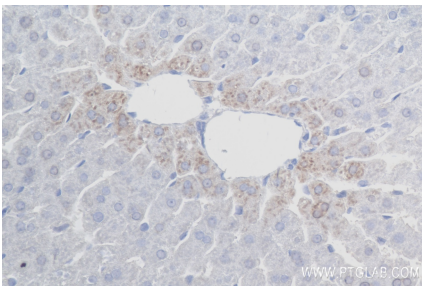
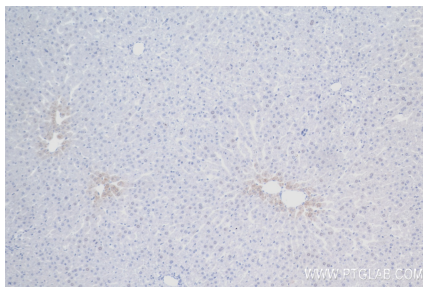
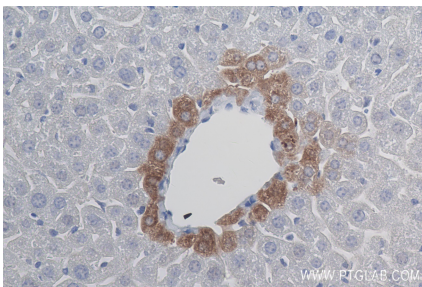
W: ptgcn.com

This product is exclusively available under Proteintech Group brand and is not available to purchase from any other manufacturer.

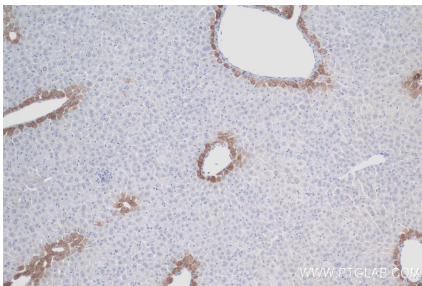
Selected Validation Data



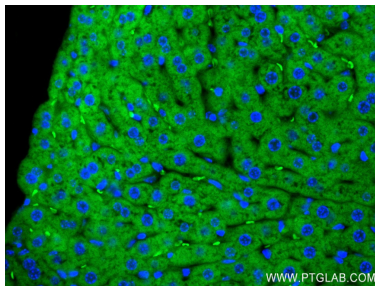
human plasma were subjected to SDS PAGE followed by western blot with 84218-1-RR (CPN1 antibody) at dilution of 1:10000 incubated at room temperature for 1.5 hours. This data was developed using the same antibody clone with 84218-1-PBS in a different storage buffer formulation.



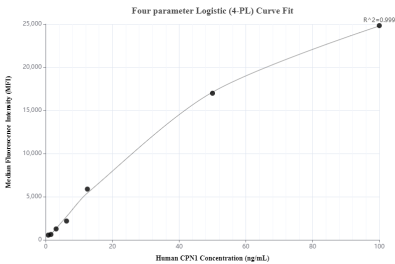
Immunohistochemical analysis of paraffin-embedded rat liver tissue slide using 84218-1-RR (CPN1 antibody) at dilution of 1:400 (under 40x lens). Heat mediated antigen retrieval with Tris-EDTA buffer (pH 9.0). This data was developed using the same antibody clone with 84218-1-PBS in a different storage buffer formulation.



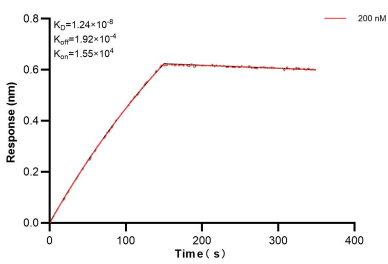
Immunohistochemical analysis of paraffin-embedded mouse liver tissue slide using 84218-1-RR (CPN1 antibody) at dilution of 1:400 (under 10x lens). Heat mediated antigen retrieval with Tris-EDTA buffer (pH 9.0). This data was developed using the same antibody clone with 84218-1-PBS in a different storage buffer formulation.



Immunofluorescent analysis of (4% PFA) fixed paraffin-embedded mouse liver tissue using CPN1 antibody (84218-1-RR, Clone: 241481A5) at dilution of 1:250 and CoraLite®488-Conjugated Goat Anti-Rabbit IgG(H+L) (SA00013-2). Heat mediated antigen retrieval with Tris-EDTA buffer (pH 9.0). This data was developed using the same antibody clone with 84218-1-PBS in a different storage buffer formulation.



Cytometric bead array standard curve of MP01152-1, CPN1 Recombinant Matched Antibody Pair, PBS Only. Capture antibody: 84218-2-PBS. Detection antibody: 84218-1-PBS. Standard: Ag4035. Range: 0.781-100 ng/mL.



Biolayer interferometry (BLI) kinetic assay of 84218-1-PBS against Human CPN1 was performed. The affinity constant is 12.4 nM.