

For Research Use Only

KLHDC3 Recombinant antibody, PBS Only (Capture)

Catalog Number: 84217-4-PBS



Basic Information

Catalog Number: 84217-4-PBS	GenBank Accession Number: BC041793	Purification Method: Protein A purification
Size: 1 mg/ml	GeneID (NCBI): 116138	CloneNo.: 241475G5
Source: Rabbit	UNIPROT ID: Q9BQ90	
Isotype: IgG	Full Name: kelch domain containing 3	
Immunogen Catalog Number: AG4879	Calculated MW: 382 aa, 43 kDa	
	Observed MW: 43 kDa	

Applications

Tested Applications:
WB, FC (Intra), Cytometric bead array, Indirect ELISA

Species Specificity:
human, rat

Background Information

The Kelch domain-containing protein 3 (KLHDC3), also designated PEAS, contains 5 Kelch repeats and may be involved in meiotic recombination process. The gene encoding KLHDC3 maps to chromosome 6, which contains around 1,200 genes within 170 million base pairs of sequence. Deletion of a portion of the q arm of chromosome 6 is associated with early onset intestinal cancer suggesting the presence of a cancer susceptibility locus. Porphyria cutanea tarda, Parkinson's disease, Stickler syndrome, 21-hydroxylase deficiency and maple syrup urine disease are also associated with genes on chromosome 6. KLHDC3 protein is mainly expressed in cytoplasm, also found in meiotic chromatin.

Storage

Storage:
Store at -80°C.
The product is shipped with ice packs. Upon receipt, store it immediately at -80°C

Storage Buffer:
PBS Only

For technical support and original validation data for this product please contact:

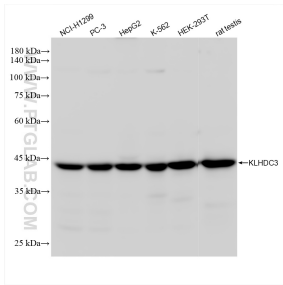
T: 4006900926

E: Proteintech-CN@ptglab.com

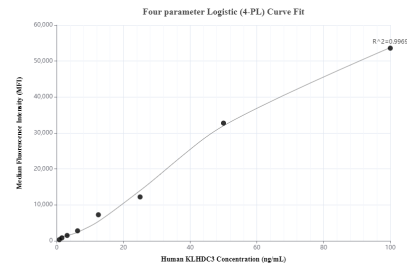
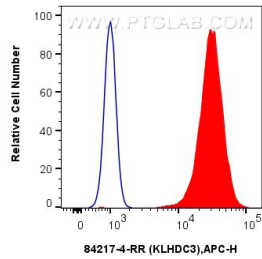
W: ptgcn.com

This product is exclusively available under Proteintech Group brand and is not available to purchase from any other manufacturer.

Selected Validation Data

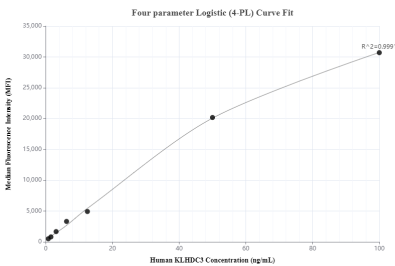


Various lysates were subjected to SDS PAGE followed by western blot with 84217-4-RR (KLHDC3 antibody) at dilution of 1:10000 incubated at room temperature for 1.5 hours. This data was developed using the same antibody clone with 84217-4-PBS in a different storage buffer formulation.

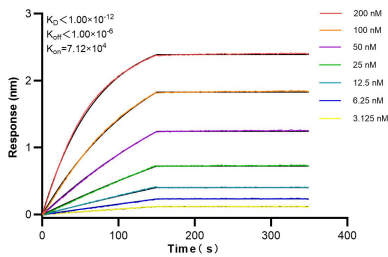


1x10⁶ PC-3 cells were intracellularly stained with 0.25 ug KLHDC3 Recombinant antibody (84217-4-RR, Clone:241475G5) and APC-Conjugated Goat Anti-Rabbit IgG(H+L)(red), or 0.25 ug Rabbit IgG Isotype Control Recombinant Antibody (98136-1-RR, Clone: 240953C9) (blue). Cells were fixed with 4% PFA and permeabilized with Flow Cytometry Perm Buffer (PF00011-C). This data was developed using the same antibody clone with 84217-4-PBS in a different storage buffer

Cytometric bead array standard curve of MP01151-2, KLHDC3 Recombinant Matched Antibody Pair, PBS Only. Capture antibody: 84217-4-PBS. Detection antibody: 84217-2-PBS. Standard: Ag4879. Range: 0.781-100 ng/mL



Cytometric bead array standard curve of MP01151-3, KLHDC3 Recombinant Matched Antibody Pair, PBS Only. Capture antibody: 84217-4-PBS. Detection antibody: 84217-1-PBS. Standard: Ag4879. Range: 0.781-100 ng/mL



Biolayer interferometry (BLI) kinetic assays of 84217-4-RR against Human KLHDC3 were performed. The affinity constant is below 1 pM.