

For Research Use Only

# MIER2 Recombinant antibody, PBS Only (Detector)

Catalog Number: 84216-1-PBS



## Basic Information

Catalog Number:

84216-1-PBS

Size:

1 mg/ml

Source:

Rabbit

Isotype:

IgG

Immunogen Catalog Number:

AG11491

GenBank Accession Number:

BC028203

GeneID (NCBI):

54531

UNIPROT ID:

Q8N344

Full Name:

mesoderm induction early response 1,  
family member 2

Calculated MW:

545 aa, 60 kDa

Observed MW:

60 kDa

Purification Method:

Protein A purification

CloneNo.:

241458D2

## Applications

Tested Applications:

WB, IF/ICC, Cytometric bead array, Indirect ELISA

Species Specificity:

human

## Background Information

Mesoderm induction early response 2 (MIER2) is a member of the MIER family of proteins, which is relatively conservative in evolution and includes three members: MIER1, MIER2, and MIER3. The MIER family is known to contribute to histone deacetylase (HDAC) activity and actively participate in histone deacetylation (PMID: 28046085; PMID: 38702028). In renal cell carcinoma, MIER2 represses PGC1A expression by recruiting HDAC1 to deacetylate P53 (PMID: 28046085).

## Storage

Storage:

Store at -80°C.

**The product is shipped with ice packs. Upon receipt, store it immediately at -80°C**

Storage Buffer:

PBS Only

For technical support and original validation data for this product please contact:

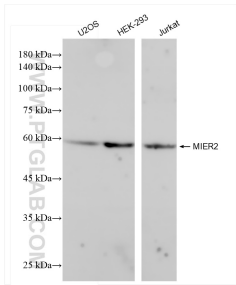
T: 4006900926

E: Proteintech-CN@ptglab.com

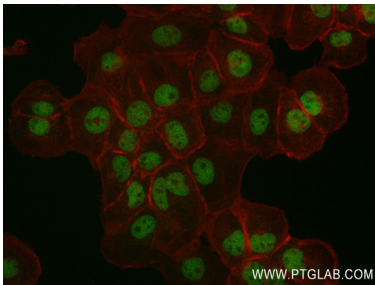
W: ptgcn.com

**This product is exclusively available under Proteintech Group brand and is not available to purchase from any other manufacturer.**

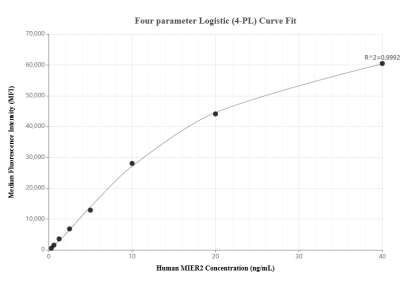
Selected Validation Data



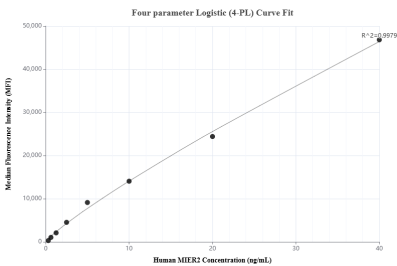
Various lysates were subjected to SDS PAGE followed by western blot with 84216-1-RR (MIER2 antibody) at dilution of 1:5000 incubated at room temperature for 1.5 hours. This data was developed using the same antibody clone with 84216-1-PBS in a different storage buffer formulation.



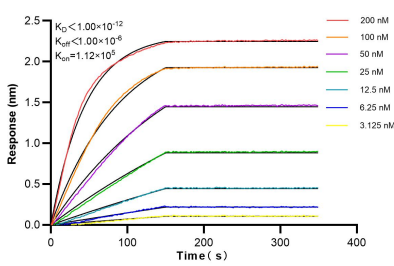
Immunofluorescent analysis of (4% PFA) fixed A431 cells using MIER2 antibody (84216-1-RR, Clone: 241458D2 ) at dilution of 1:400 and CoraLite®488-Conjugated Goat Anti-Rabbit IgG(H+L) (SA00013-2), CL594-Phalloidin (red). This data was developed using the same antibody clone with 84216-1-PBS in a different storage buffer formulation.



Cytometric bead array standard curve of MP01148-1, MIER2 Recombinant Matched Antibody Pair, PBS Only. Capture antibody: 84216-2-PBS. Detection antibody: 84216-1-PBS. Standard: Ag11491. Range: 0.313-40 ng/mL



Cytometric bead array standard curve of MP01148-2, MIER2 Recombinant Matched Antibody Pair, PBS Only. Capture antibody: 84216-3-PBS. Detection antibody: 84216-1-PBS. Standard: Ag11491. Range: 0.313-40 ng/mL



Biolayer interferometry (BLI) kinetic assays of 84216-1-RR against Human MIER2 were performed. The affinity constant is below 1 pM.