

For Research Use Only

# CD3 Delta Recombinant antibody, PBS Only (Detector)

Catalog Number: 84214-4-PBS



## Basic Information

Catalog Number: 84214-4-PBS	GenBank Accession Number: BC070321	Purification Method: Protein A purification
Concentration: 1 mg/ml	GeneID (NCBI): 915	CloneNo.: 241523H2
Source: Rabbit	UNIPROT ID: P04234	
Isotype: IgG	Full Name: CD3d molecule, delta (CD3-TCR complex)	
Immunogen Catalog Number: EG2288	Calculated MW: 171 aa, 19 kDa	
	Observed MW: 20-25 kDa	

## Applications

**Tested Applications:**  
WB, IHC, IF-P, Cytometric bead array, Indirect ELISA

**Species Specificity:**  
human

## Background Information

CD3 is a complex of proteins that directly associates with the T cell receptor (TCR). The TCR/CD3 complex of T-lymphocytes consists of either a TCR alpha/beta or TCR gamma/delta heterodimer coexpressed at the cell surface with the invariant subunits of CD3 labeled gamma, delta, epsilon, zeta, and eta. The TCR recognizes antigens bound to major histocompatibility complex (MHC) molecules. TCR-mediated peptide-MHC recognition is transmitted to the CD3 complex, leading to the intracellular signal transduction. CD3 is considered to be a pan-T cell marker for detection of normal and neoplastic T cells. CD3 delta/CD3D is a single-pass type I membrane protein which consists of an extracellular domain of 84 amino acids, a transmembrane region, and a cytoplasmic domain of 45 amino acids. Defects in CD3 delta are a cause of severe combined immunodeficiency.

## Storage

**Storage:**  
Store at -80°C.  
**The product is shipped with ice packs. Upon receipt, store it immediately at -80°C**

**Storage Buffer:**  
PBS Only

For technical support and original validation data for this product please contact:

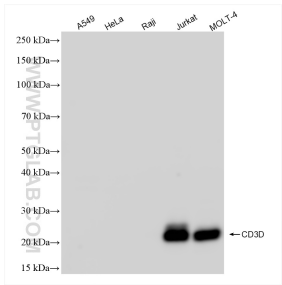
T: 4006900926

E: Proteintech-CN@ptglab.com

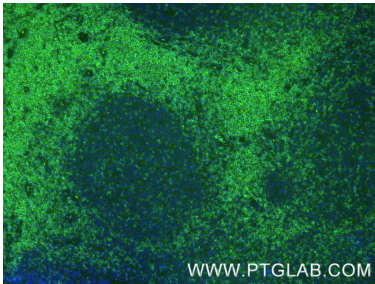
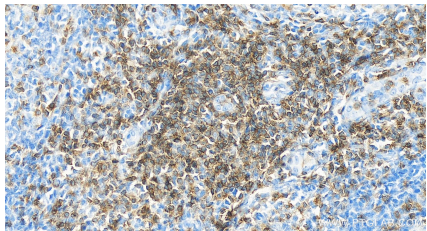
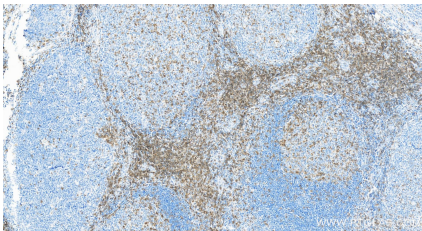
W: ptgcn.com

**This product is exclusively available under Proteintech Group brand and is not available to purchase from any other manufacturer.**

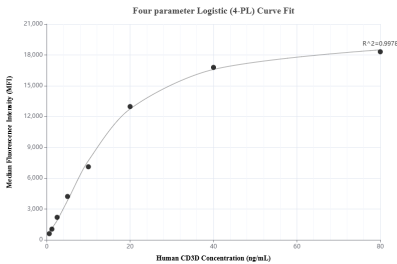
Selected Validation Data



Various lysates were subjected to SDS PAGE followed by western blot with 84214-4-RR (CD3 Delta antibody) at dilution of 1:10000 incubated at room temperature for 1.5 hours. This data was developed using the same antibody clone with 84214-4-PBS in a different storage buffer formulation.



Immunofluorescent analysis of (4% PFA) fixed paraffin-embedded human tonsillitis tissue using CD3 Delta antibody (84214-4-RR, Clone: 241523H2 ) at dilution of 1:400 and CoraLite®488-Conjugated Goat Anti-Rabbit IgG(H+L) (SA00013-2). Heat mediated antigen retrieval with Tris-EDTA buffer (pH 9.0). This data was developed using the same antibody clone with 84214-4-PBS in a different storage buffer formulation.



Cytometric bead array standard curve of MP01149-2, CD3D Recombinant Matched Antibody Pair, PBS Only. Capture antibody: 84214-1-PBS. Detection antibody: 84214-4-PBS. Standard: Eg2288. Range: 0.625-80 ng/mL.