

For Research Use Only

Mouse CD23/Fc epsilon RII Recombinant antibody, PBS Only (Capture)

Catalog Number: 84212-4-PBS



Basic Information

Catalog Number: 84212-4-PBS	GenBank Accession Number: EDL21948.1	Purification Method: Protein A purification
Size: 1 mg/ml	GeneID (NCBI): 14128	CloneNo.: 241385A5
Source: Rabbit	UNIPROT ID: P20693-1	
Isotype: IgG	Full Name: Fc receptor, IgE, low affinity II, alpha polypeptide	
	Calculated MW: 38kDa	

Applications

Tested Applications:
Sandwich ELISA, Indirect ELISA, Sample test

Species Specificity:
mouse

Background Information

Storage

Storage:
Store at -80°C.
The product is shipped with ice packs. Upon receipt, store it immediately at -80°C
Storage Buffer:
PBS Only

For technical support and original validation data for this product please contact:

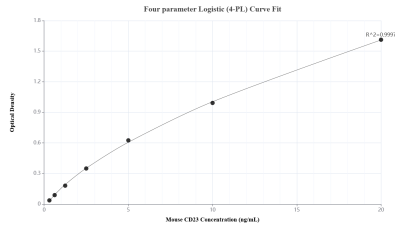
T: 4006900926

E: Proteintech-CN@ptglab.com

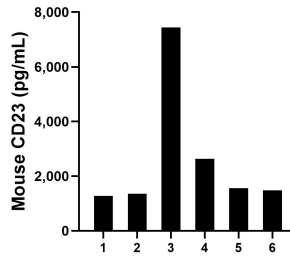
W: ptgcn.com

This product is exclusively available under Proteintech Group brand and is not available to purchase from any other manufacturer.

Selected Validation Data



Sandwich ELISA standard curve of MP01134-2, Mouse CD23 Recombinant Matched Antibody Pair - PBS only. 84212-4-PBS was coated to a plate as the capture antibody and incubated with serial dilutions of standard Eg1295. 84212-3-PBS was HRP conjugated as the detection antibody. Range: 0.313-20 ng/mL.



Serum of six mouse was measured. The CD23 concentration of detected samples was determined to be 2624.00 pg/mL with a range of 1279.00 - 7445.00 pg/mL.