

For Research Use Only

# CD23/Fc epsilon RII Recombinant antibody

Catalog Number: 84212-3-RR



## Basic Information

Catalog Number: 84212-3-RR	GenBank Accession Number: EDL21948.1	Purification Method: Protein A purification
Concentration: 1000 µg/ml	GeneID (NCBI): 14128	CloneNo.: 241385C9
Source: Rabbit	UNIPROT ID: P20693-1	Recommended Dilutions: WB 1:2000-1:10000 IHC 1:500-1:2000
Isotype: IgG	Full Name: Fc receptor, IgE, low affinity II, alpha polypeptide	
Immunogen Catalog Number: EG1295	Calculated MW: 38kDa Observed MW: 46 kDa	

## Applications

Tested Applications: WB, IHC, ELISA	Positive Controls:
Species Specificity: mouse	WB : mouse spleen tissue, IHC : mouse spleen tissue,
<b>Note-IHC: suggested antigen retrieval with TE buffer pH 9.0; (*) Alternatively, antigen retrieval may be performed with citrate buffer pH 6.0</b>	

## Background Information

CD23/Fc ε RII) is a low-affinity receptor for immunoglobulin E (IgE) and CR2/CD21, involved in B cell differentiation and IgE regulation. Two forms of Fc ε RII (Fc ε RIIa and Fc ε RIIb) were found to exist, which differ in structure only in the N-terminal cytoplasmic region, and Fc ε RIIa and Fc ε RIIb play roles in effector cells of B-cell and IgE-mediated immunity, respectively. On B cells, initiates IgE-dependent antigen uptake and presentation to T cells. On macrophages, after IgE binding and antigen cross-linking, intracellular killing of parasites is induced by activation of the L-arginine-nitric oxide pathway.

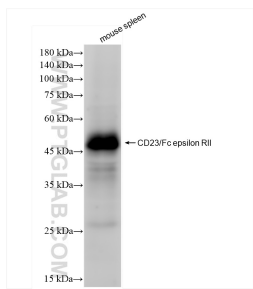
## Storage

Storage:  
Store at -20°C. Stable for one year after shipment.  
Storage Buffer:  
PBS with 0.02% sodium azide and 50% glycerol, pH7.3  
Aliquoting is unnecessary for -20°C storage

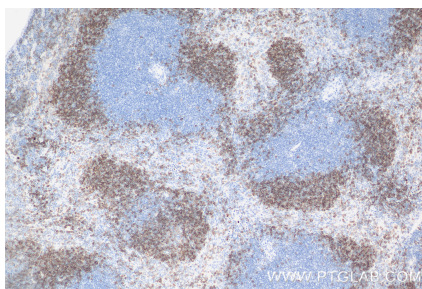
For technical support and original validation data for this product please contact:  
T: 4006900926 E: Proteintech-CN@ptglab.com W: ptgcn.com

This product is exclusively available under Proteintech Group brand and is not available to purchase from any other manufacturer.

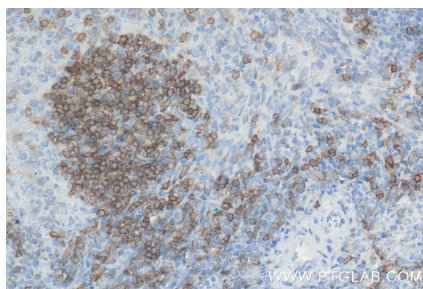
## Selected Validation Data



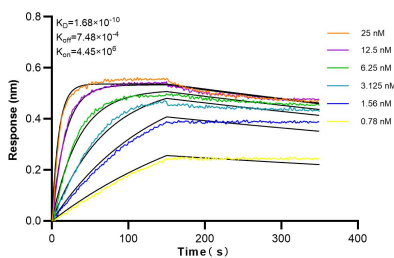
mouse spleen tissue were subjected to SDS PAGE followed by western blot with 84212-3-RR (CD23/Fc epsilon RII antibody) at dilution of 1:5000 incubated at room temperature for 1.5 hours.



Immunohistochemical analysis of paraffin-embedded mouse spleen tissue slide using 84212-3-RR (CD23/Fc epsilon RII antibody) at dilution of 1:1000 (under 10x lens). Heat mediated antigen retrieval with Tris-EDTA buffer (pH 9.0).



Immunohistochemical analysis of paraffin-embedded mouse spleen tissue slide using 84212-3-RR (CD23/Fc epsilon RII antibody) at dilution of 1:1000 (under 40x lens). Heat mediated antigen retrieval with Tris-EDTA buffer (pH 9.0).



Biolayer interferometry (BLI) kinetic assays of 84212-3-RR against Mouse CD23/Fc epsilon RII were performed. The affinity constant is 0.168 nM.