

For Research Use Only

FGFR2 Recombinant antibody, PBS Only (Detector)

Catalog Number: 84205-4-PBS



Basic Information

Catalog Number:	GenBank Accession Number:	Purification Method:
84205-4-PBS	NM_000141.4	Protein A purification
Size:	GeneID (NCBI):	CloneNo.:
1 mg/ml	2263	241383G9
Source:	UNIPROT ID:	
Rabbit	P21802	
Isotype:	Full Name:	
IgG	fibroblast growth factor receptor 2	
	Calculated MW:	
	92kd	
	Observed MW:	
	85 kDa	

Applications

Tested Applications:
WB, IHC, Cytometric bead array, Indirect ELISA

Species Specificity:
human, mouse

Background Information

FGFR2 (Fibroblast growth factor receptor 2) is a tyrosine-protein kinase that acts as a cell-surface receptor for fibroblast growth factors and plays an essential role in the regulation of cell proliferation, differentiation, migration, and apoptosis. Ligand binding leads to the activation of several signaling pathways, such as RAS, MAPK1/ERK2, MAPK3/ERK1, and the MAP Kinase signaling pathway, as well as the AKT1 signaling pathway. Mutations in the gene of FGFR2 are associated with Crouzon syndrome, Pfeiffer syndrome, Craniosynostosis, Apert syndrome, Jackson-Weiss syndrome, Beare-Stevenson cutis gyrata syndrome, Saethre-Chotzen syndrome, and syndromic craniosynostosis.

Storage

Storage:
Store at -80°C.

The product is shipped with ice packs. Upon receipt, store it immediately at -80°C

Storage Buffer:
PBS Only

For technical support and original validation data for this product please contact:

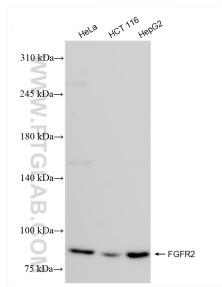
T: 4006900926

E: Proteintech-CN@ptglab.com

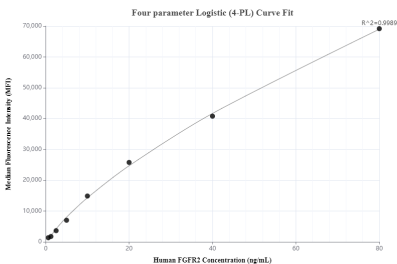
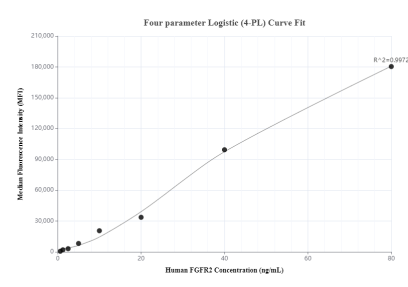
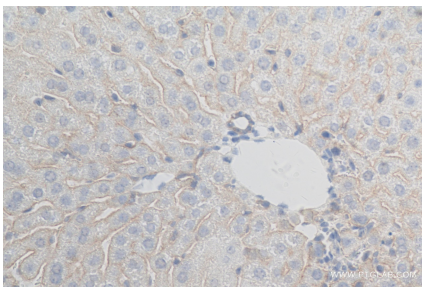
W: ptgcn.com

This product is exclusively available under Proteintech Group brand and is not available to purchase from any other manufacturer.

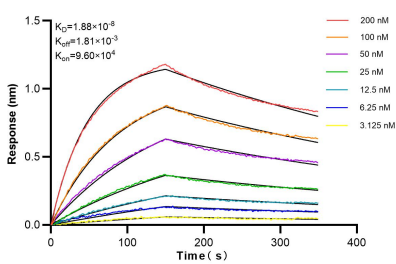
Selected Validation Data



Various lysates were subjected to SDS PAGE followed by western blot with 84205-4-RR (FGFR2 antibody) at dilution of 1:10000 incubated at room temperature for 1.5 hours. This data was developed using the same antibody clone with 84205-4-PBS in a different storage buffer formulation.



Cytometric bead array standard curve of MP01128-3, FGFR2 Recombinant Matched Antibody Pair, PBS Only. Capture antibody: 84205-2-PBS. Detection antibody: 84205-4-PBS. Standard: Eg1265. Range: 0.625-80 ng/mL.



Biolayer interferometry (BLI) kinetic assays of 84205-4-RR against Human FGFR2 were performed. The affinity constant is 18.8 nM.