

For Research Use Only

FGFR2 Recombinant antibody, PBS Only (Capture)

Catalog Number: 84205-1-PBS



Basic Information

Catalog Number:

84205-1-PBS

Size:

1 mg/ml

Source:

Rabbit

Isotype:

IgG

GenBank Accession Number:

NM_000141.4

GeneID (NCBI):

2263

UNIPROT ID:

P21802

Full Name:

fibroblast growth factor receptor 2

Calculated MW:

92kd

Purification Method:

Protein A purification

CloneNo.:

241383A5

Applications

Tested Applications:

Cytometric bead array, Sandwich ELISA, Indirect ELISA,
Sample test

Species Specificity:

human

Background Information

Storage

Storage:

Store at -80°C.

The product is shipped with ice packs. Upon receipt, store it immediately at -80°C

Storage Buffer:

PBS Only

For technical support and original validation data for this product please contact:

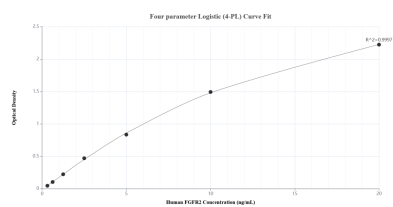
T: 4006900926

E: Proteintech-CN@ptglab.com

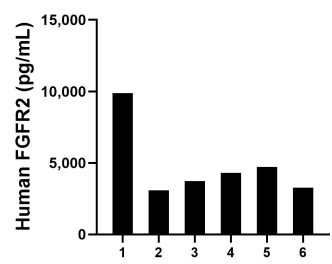
W: ptgcn.com

This product is exclusively available under Proteintech Group brand and is not available to purchase from any other manufacturer.

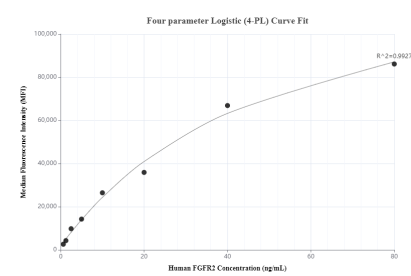
Selected Validation Data



Sandwich ELISA standard curve of MP01128-2, Human FGFR2 Recombinant Matched Antibody Pair - PBS only. 84205-1-PBS was coated to a plate as the capture antibody and incubated with serial dilutions of standard Eg1265. 84205-2-PBS was HRP conjugated as the detection antibody. Range: 0.313-20 ng/mL



Serum of six individual healthy human donors was measured. The FGFR2 concentration of detected samples was determined to be 4,832.03 pg/mL with a range of 3,076.26-9,887.31 pg/mL



Cytometric bead array standard curve of MP01128-2, FGFR2 Recombinant Matched Antibody Pair, PBS Only. Capture antibody: 84205-1-PBS. Detection antibody: 84205-2-PBS. Standard: Eg1265. Range: 0.625-80 ng/mL