

For Research Use Only

LIMPII Recombinant antibody, PBS Only (Capture)

Catalog Number: 84193-4-PBS

Featured Product



Basic Information

Catalog Number:

84193-4-PBS

Concentration:

1 mg/ml

Source:

Rabbit

Isotype:

IgG

Immunogen Catalog Number:

AG25908

GenBank Accession Number:

BC021892

GeneID (NCBI):

950

UNIPROT ID:

Q14108

Full Name:

scavenger receptor class B, member 2

Calculated MW:

478 aa, 54 kDa

Observed MW:

75 kDa

Purification Method:

Protein A purification

CloneNo.:

241468F9

Applications

Tested Applications:

WB, Sandwich ELISA, Indirect ELISA, Sample test

Species Specificity:

human

Background Information

Storage

Storage:

Store at -80°C.

The product is shipped with ice packs. Upon receipt, store it immediately at -80°C

Storage Buffer:

PBS only, pH7.3

For technical support and original validation data for this product please contact:

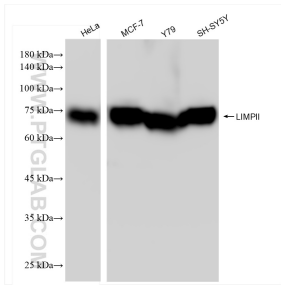
T: 4006900926

E: Proteintech-CN@ptglab.com

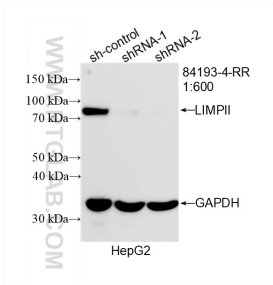
W: ptgcn.com

This product is exclusively available under Proteintech Group brand and is not available to purchase from any other manufacturer.

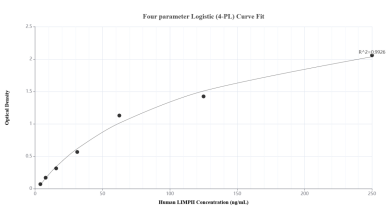
Selected Validation Data



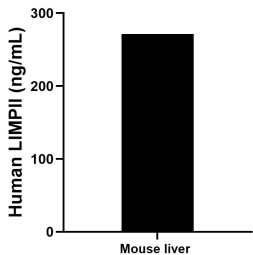
Various lysates were subjected to SDS PAGE followed by western blot with 84193-4-RR (LIMPII antibody) at dilution of 1:5000 incubated at room temperature for 1.5 hours. This data was developed using the same antibody clone with 84193-4-PBS in a different storage buffer formulation.



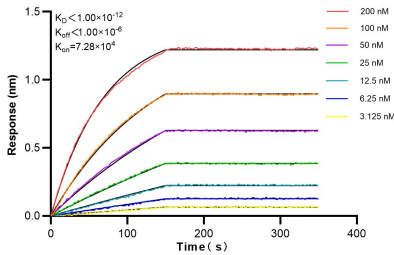
WB result of LIMPII antibody (84193-4-RR; 1:600; incubated at room temperature for 1.5 hours) with sh-Control and sh-LIMPII transfected HepG2 cells. This data was developed using the same antibody clone with 84193-4-PBS in a different storage buffer formulation.



Sandwich ELISA standard curve of MP01086-4, Human LIMPII Recombinant Matched Antibody Pair - PBS only. 84193-4-PBS was coated to a plate as the capture antibody and incubated with serial dilutions of standard Ag25908. 84193-3-PBS was HRP conjugated as the detection antibody. Range: 3.91-250 ng/mL



The mean LIMPII concentration was determined to be 271.42 ng/mL in mouse liver tissue extract based on a 3.70 mg/mL extract load.



Biolayer interferometry (BLI) kinetic assays of 84193-4-RR against Human LIMPII were performed. The affinity constant is below 1 pM.