

For Research Use Only

KI67 Recombinant monoclonal antibody, PBS Only (Detector)

Catalog Number: 84192-9-PBS



Basic Information

Catalog Number:

84192-9-PBS

Source:

Rabbit

Isotype:

IgG

GenBank Accession Number:

NM_002417

GeneID (NCBI):

4288

UNIPROT ID:

P46013

Full Name:

antigen identified by monoclonal antibody Ki-67

Calculated MW:

359 kDa

Purification Method:

Protein A purification

CloneNo.:

241499A3

Applications

Tested Applications:

Sandwich ELISA, Indirect ELISA

Species Specificity:

human

Background Information

Storage

Storage:

Store at -80°C.

The product is shipped with ice packs. Upon receipt, store it immediately at -80°C

Storage Buffer:

PBS only, pH7.3

For technical support and original validation data for this product please contact:

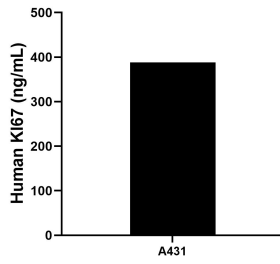
T: 4006900926

E: Proteintech-CN@ptglab.com

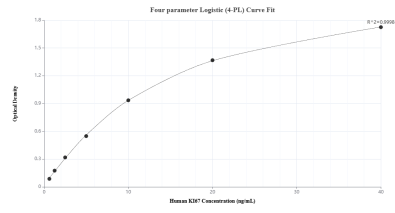
W: ptgcn.com

This product is exclusively available under Proteintech Group brand and is not available to purchase from any other manufacturer.

Selected Validation Data



The mean Ki-67 concentration was determined to be 388.00 ng/mL in A431 cell extract based on a 1.2 mg/mL extract load.



Sandwich ELISA standard curve of MP01085-2, Human Ki-67 Recombinant Matched Antibody Pair - PBS only. 84192-10-PBS was coated to a plate as the capture antibody and incubated with serial dilutions of standard SY02291. 84192-9-PBS was HRP conjugated as the detection antibody. Range: 0.625-40 ng/mL