

For Research Use Only

# Ki-67 Recombinant antibody, PBS Only

Catalog Number: 84192-3-PBS



## Basic Information

Catalog Number:

84192-3-PBS

Concentration:

1 mg/ml

Source:

Rabbit

Isotype:

IgG

GenBank Accession Number:

NM\_002417

GeneID (NCBI):

4288

UNIPROT ID:

P46013

Full Name:

antigen identified by monoclonal antibody Ki-67

Calculated MW:

359 kDa

Purification Method:

Protein A purification

CloneNo.:

241499B1

## Applications

Tested Applications:

WB, IHC, IF/ICC, IF-P, Indirect ELISA

Species Specificity:

human

## Background Information

The Ki-67 protein (also known as MKI67) is a cellular marker for proliferation. Ki67 is present during all active phases of the cell cycle (G1, S, G2 and M), but is absent in resting cells (G0). Cellular content of Ki-67 protein markedly increases during cell progression through S phase of the cell cycle. Therefore, the nuclear expression of Ki67 can be evaluated to assess tumor proliferation by immunohistochemistry. It has been demonstrated to be of prognostic value in breast cancer. In head and neck cancer, several studies have reported an association between high proliferative activity and poorer prognosis.

## Storage

Storage:

Store at -80°C.

**The product is shipped with ice packs. Upon receipt, store it immediately at -80°C**

Storage Buffer:

PBS only, pH7.3

For technical support and original validation data for this product please contact:

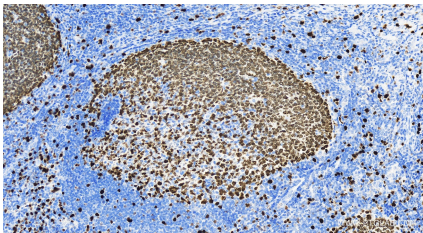
T: 4006900926

E: [Proteintech-CN@ptglab.com](mailto:Proteintech-CN@ptglab.com)

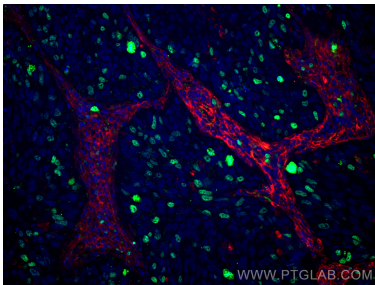
W: [ptgcn.com](http://ptgcn.com)

**This product is exclusively available under Proteintech Group brand and is not available to purchase from any other manufacturer.**

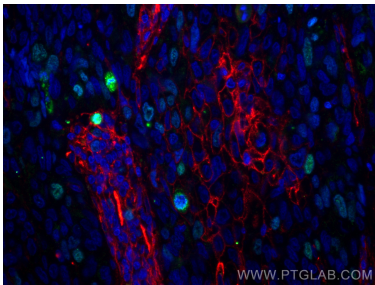
Selected Validation Data



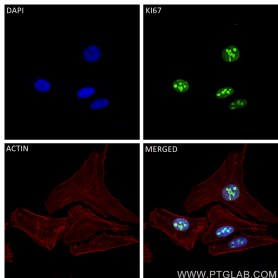
Immunohistochemical analysis of paraffin-embedded human tonsillitis tissue slide using 84192-3-RR (KI67 antibody) at dilution of 1:2000 (under 40x lens). Heat mediated antigen retrieval with Tris-EDTA buffer (pH 9.0). This data was developed using the same antibody clone with 84192-3-PBS in a different storage buffer formulation.



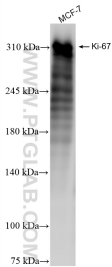
Immunofluorescent analysis of (4% PFA) fixed paraffin-embedded human lung cancer tissue using KI67 antibody (84192-3-RR, Clone: 241499B1 ) at dilution of 1:200 and Multi-rAb CoraLite® Plus 488-Goat Anti-Rabbit Recombinant Secondary Antibody (H+L) (RGAR002), ICAM-1 antibody (60299-1-Ig, Clone: 2F9A8, red). Heat mediated antigen retrieval with Tris-EDTA buffer (pH 9.0). This data was developed using the same antibody clone with 84192-3-PBS in a different storage buffer formulation.



Immunofluorescent analysis of (4% PFA) fixed paraffin-embedded human lung cancer tissue using KI67 antibody (84192-3-RR, Clone: 241499B1 ) at dilution of 1:200 and Multi-rAb CoraLite® Plus 488-Goat Anti-Rabbit Recombinant Secondary Antibody (H+L) (RGAR002), ICAM-1 antibody (60299-1-Ig, Clone: 2F9A8, red). Heat mediated antigen retrieval with Tris-EDTA buffer (pH 9.0). This data was developed using the same antibody clone with 84192-3-PBS in a different storage buffer formulation.



Immunofluorescent analysis of (4% PFA) fixed HeLa cells using KI67 antibody (84192-3-RR, Clone: 241499B1 ) at dilution of 1:250 and CoraLite® 488-Conjugated Goat Anti-Rabbit IgG(H+L) (SA00013-2), CL594-Phalloidin (red). This data was developed using the same antibody clone with 84192-3-PBS in a different storage buffer formulation.



MCF-7 cells were subjected to SDS PAGE followed by western blot with 84192-3-RR (KI-67 antibody) at dilution of 1:16000 incubated at room temperature for 1.5 hours. This data was developed using the same antibody clone with 84192-3-PBS in a different storage buffer formulation.