

For Research Use Only

MED6 Recombinant antibody, PBS Only (Capture)

Catalog Number: 84184-4-PBS



Basic Information

Catalog Number: 84184-4-PBS	GenBank Accession Number: BC004106	Purification Method: Protein A purification
Concentration: 1 mg/ml	GeneID (NCBI): 10001	CloneNo.: 241382H2
Source: Rabbit	UNIPROT ID: O75586	
Isotype: IgG	Full Name: mediator complex subunit 6	
Immunogen Catalog Number: AG7541	Calculated MW: 28 kDa	
	Observed MW: 33 kDa	

Applications

Tested Applications:
WB, IF/ICC, FC (Intra), Cytometric bead array,
Sandwich ELISA, Indirect ELISA, Sample test

Species Specificity:
human, mouse

Background Information

MED6 is a part of mediator complex. Mediator functions as a bridge to convey information from gene-specific regulatory proteins to the basal RNA polymerase II transcription machinery. Mediator is recruited to promoters by direct interactions with regulatory proteins and serves as a scaffold for the assembly of a functional preinitiation complex with RNA polymerase II and the general transcription factors.

Storage

Storage:
Store at -80°C.
The product is shipped with ice packs. Upon receipt, store it immediately at -80°C

Storage Buffer:
PBS only, pH7.3

For technical support and original validation data for this product please contact:

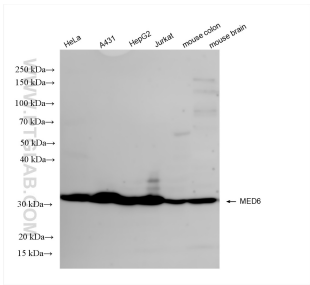
T: 4006900926

E: Proteintech-CN@ptglab.com

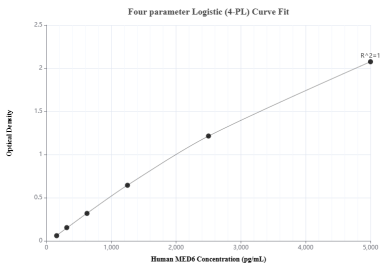
W: ptgcn.com

This product is exclusively available under Proteintech Group brand and is not available to purchase from any other manufacturer.

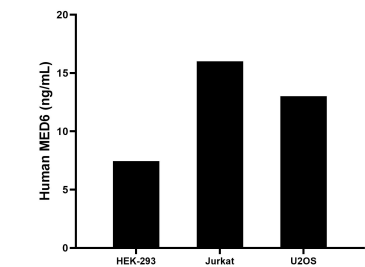
Selected Validation Data



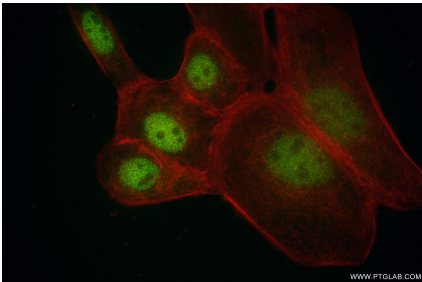
Various lysates were subjected to SDS PAGE followed by western blot with 84184-4-RR (MED6 antibody) at dilution of 1:10000 incubated at room temperature for 1.5 hours. This data was developed using the same antibody clone with 84184-4-PBS in a different storage buffer formulation.



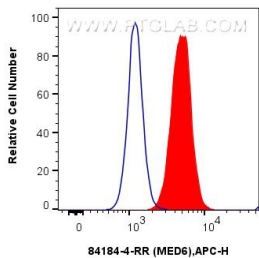
Sandwich ELISA standard curve of MP01087-3, Human MED6 Recombinant Matched Antibody Pair - PBS only. 84184-4-PBS was coated to a plate as the capture antibody and incubated with serial dilutions of standard Ag7541. 84184-2-PBS was HRP conjugated as the detection antibody. Range: 156-5000 pg/mL



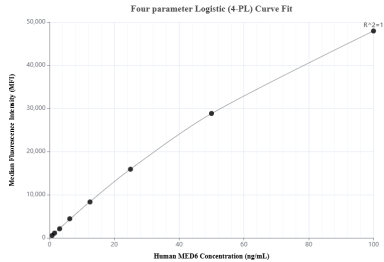
The mean MED6 concentration was determined to be 7.45 ng/mL in HEK-293 cell extract based on a 1.5 mg/mL extract load, 16.00 ng/mL in Jurkat cell extract based on a 1.5 mg/mL extract load and 13.01 ng/mL in U2OS cell extract based on a 3.1 mg/mL extract load.



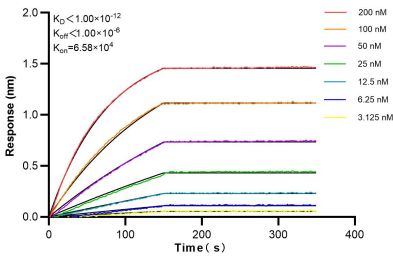
Immunofluorescent analysis of (4% PFA) fixed A431 cells using MED6 antibody (84184-4-RR, Clone: 241382H2) at dilution of 1:500 and CoraLite®488-Conjugated Goat Anti-Rabbit IgG(H+L) (SA00013-2), CL594-Phalloidin (red). This data was developed using the same antibody clone with 84184-4-PBS in a different storage buffer formulation.



1x10⁶ A431 cells were intracellularly stained with 0.25 ug MED6 Recombinant antibody (84184-4-RR, Clone:241382H2) and APC-Conjugated Goat Anti-Rabbit IgG(H+L)(red), or 0.25 ug Isotype Control (blue). Cells were fixed and permeabilized with True-Nuclear Transcription Factor Buffer Set. This data was developed using the same antibody clone with 84184-4-PBS in a different storage buffer formulation.



Cytometric bead array standard curve of MP01087-3, MED6 Recombinant Matched Antibody Pair, PBS Only. Capture antibody: 84184-4-PBS. Detection antibody: 84184-2-PBS. Standard: Ag7541. Range: 0.781-100 ng/mL



Biolayer interferometry (BLI) kinetic assays of 84184-4-RR against Human MED6 were performed. The affinity constant is below 1 pM.