

For Research Use Only

HER2/ErbB2 Recombinant antibody, PBS Only (Capture/Detector)

Catalog Number: 84182-3-PBS



Basic Information

Catalog Number:

84182-3-PBS

Concentration:

1000 ug/ml

Source:

Rabbit

Isotype:

IgG

GenBank Accession Number:

BC156755

GeneID (NCBI):

2064

UNIPROT ID:

P04626

Full Name:

v-erb-b2 erythroblastic leukemia
viral oncogene homolog 2,
neuro/glioblastoma derived
oncogene homolog (avian)

Calculated MW:

1255 aa, 138 kDa

Purification Method:

Protein A purification

CloneNo.:

241409H4

Applications

Tested Applications:

Cytometric bead array, Sandwich ELISA, Indirect ELISA,
Sample test

Species Specificity:

human

Background Information

Storage

Storage:

Store at -80°C.

The product is shipped with ice packs. Upon receipt, store it immediately at -80°C

Storage Buffer:

PBS only, pH7.3

For technical support and original validation data for this product please contact:

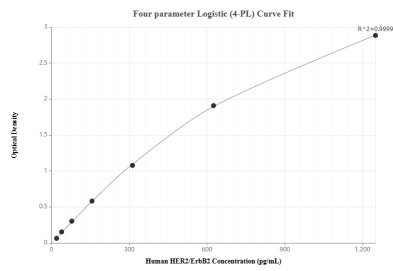
T: 4006900926

E: Proteintech-CN@ptglab.com

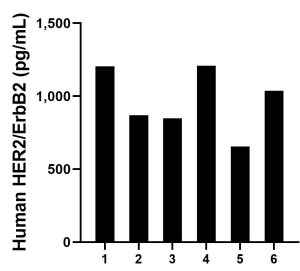
W: ptgcn.com

This product is exclusively available under Proteintech Group brand and is not available to purchase from any other manufacturer.

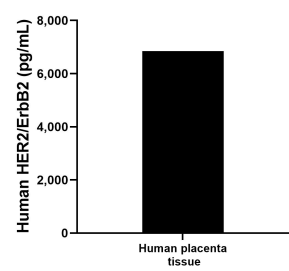
Selected Validation Data



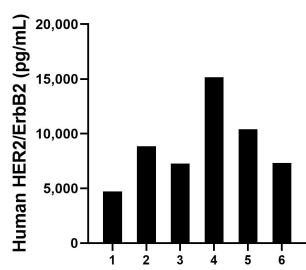
Sandwich ELISA standard curve of MP01080-1, Human HER2/ErbB2 Recombinant Matched Antibody Pair - PBS only. 84182-2-PBS was coated to a plate as the capture antibody and incubated with serial dilutions of standard RP02350. 84182-3-PBS was HRP conjugated as the detection antibody. Range: 19.5-1250 pg/mL



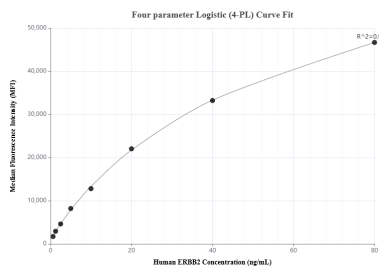
Human milk of six individual healthy human donors was measured. The human HER2/ErbB2 concentration of detected samples was determined to be 969.9 pg/mL with a range of 654.3 - 1,208.0 pg/mL



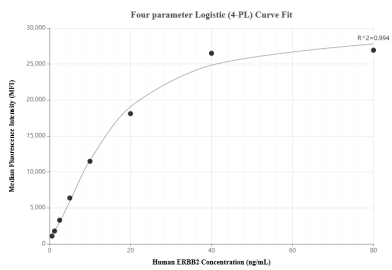
The mean HER2/ErbB2 concentration was determined to be 6,844.8 pg/mL in human placenta tissue extract based on a 2.9 mg/mL extract load.



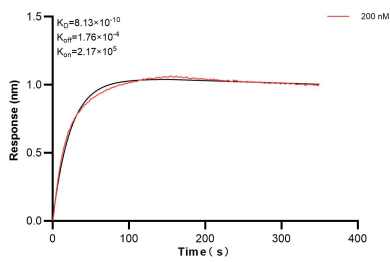
Serum of six individual healthy human donors was measured. The human HER2/ErbB2 concentration of detected samples was determined to be 8,952.9 pg/mL with a range of 4,726.1 - 15,157.7 pg/mL



Cytometric bead array standard curve of MP01080-1, HER2/ERBB2 Recombinant Matched Antibody Pair, PBS Only. Capture antibody: 84182-2-PBS. Detection antibody: 84182-3-PBS. Standard: RP02350. Range: 0.625-80 ng/mL



Cytometric bead array standard curve of MP01080-3, ERBB2 Recombinant Matched Antibody Pair, PBS Only. Capture antibody: 84182-3-PBS. Detection antibody: 84182-1-PBS. Standard: RP02350. Range: 0.625-80 ng/mL



Biolayer interferometry (BLI) kinetic assay of 84182-3-PBS against Human HER2/ErbB2 was performed. The affinity constant is 0.813 nM.